

(51) International Patent Classification:  
A61K 39/00 (2006.01)

(21) International Application Number:

PCT/US20 13/050267

(22) International Filing Date:

12 July 2013 (12.07.2013)

(25) Filing Language:

English

(26) Publication Language:

English

(30) Priority Data:

61/671,482	13 July 2012 (13.07.2012)	US
61/782,982	14 March 2013 (14.03.2013)	US

(71) Applicants: **THE TRUSTEES OF THE UNIVERSITY OF PENNSYLVANIA** [US/US]; Center For Technology Transfer, 3160 Chestnut Street, Suite 200, Philadelphia, PA 19104-6283 (US). **THE CHILDREN'S HOSPITAL OF PHILADELPHIA** [US/US]; 34th Street and Civic Center Boulevard, Philadelphia, PA 19104 (US).

(72) Inventors: **JUNE, Carl, H.**; 409 Baird Road, Merion Station, PA 19066 (US). **LEVINE, Bruce, L.**; 1258 Liberty Bell Drive, Cherry Hill, NJ 08003 (US). **KALOS, Michael, D.**; 716 Carpenter Lane, Philadelphia, PA 19119 (US). **GRUPP, Stephan**; 107 Llandaff Road, Havertown, PA 19083 (US).

(74) Agents: **NGUYEN, Quang D.** et al; Riverside Law, LLP, 300 Four Falls Corporate Center, Suite 710, 300 Conshohocken State Road, West Conshohocken, PA 19428 (US).

(81) Designated States (unless otherwise indicated, for every kind of national protection available): AE, AG, AL, AM, AO, AT, AU, AZ, BA, BB, BG, BH, BN, BR, BW, BY, BZ, CA, CH, CL, CN, CO, CR, CU, CZ, DE, DK, DM, DO, DZ, EC, EE, EG, ES, FI, GB, GD, GE, GH, GM, GT, HN, HR, HU, ID, IL, IN, IS, JP, KE, KG, KN, KP, KR, KZ, LA, LC, LK, LR, LS, LT, LU, LY, MA, MD, ME, MG, MK, MN, MW, MX, MY, MZ, NA, NG, NI, NO, NZ, OM, PA, PE, PG, PH, PL, PT, QA, RO, RS, RU, RW, SC, SD, SE, SG, SK, SL, SM, ST, SV, SY, TH, TJ, TM, TN, TR, TT, TZ, UA, UG, US, UZ, VC, VN, ZA, ZM, ZW.

(84) Designated States (unless otherwise indicated, for every kind of regional protection available): ARIPO (BW, GH, GM, KE, LR, LS, MW, MZ, NA, RW, SD, SL, SZ, TZ, UG, ZM, ZW), Eurasian (AM, AZ, BY, KG, KZ, RU, TJ, TM), European (AL, AT, BE, BG, CH, CY, CZ, DE, DK, EE, ES, FI, FR, GB, GR, HR, HU, IE, IS, IT, LT, LU, LV, MC, MK, MT, NL, NO, PL, PT, RO, RS, SE, SI, SK, SM, TR), OAPI (BF, BJ, CF, CG, CI, CM, GA, GN, GQ, GW, KM, ML, MR, NE, SN, TD, TG).

Published:

— with international search report (Art. 21(3))

[Continued on nextpage]

(54) Title: TOXICITY MANAGEMENT FOR ANTI-TUMOR ACTIVITY OF CARs

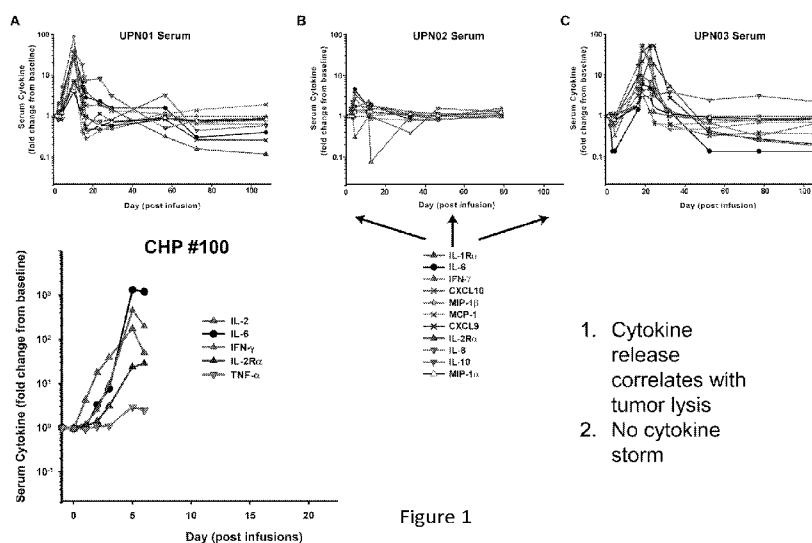


Figure 1

(57) Abstract: The present invention provides compositions and methods for treating cancer in a patient. In one embodiment, the method comprises a first-line therapy comprising administering to a patient in need thereof a genetically modified T cell expressing a CAR wherein the CAR comprises an antigen binding domain, a transmembrane domain, a costimulatory signaling region, and a CD3 zeta signaling domain and monitoring the levels of cytokines in the patient post T cell infusion to determine the type of second-line of therapy appropriate for treating the patient as a consequence of the presence of the CAR T cell in the patient.



TITLE OF THE INVENTION

## TOXICITY MANAGEMENT FOR ANTI-TUMOR ACTIVITY OF CARS

### CROSS-REFERENCE TO RELATED APPLICATION

5                    This application claims priority to U.S. Provisional Patent Application  
No. 61/671,482, filed on July 13, 2012 and U.S. Provisional Patent Application No.  
61/782,982, filed on March 14, 2013, each of which application is hereby  
incorporated herein by reference in its entirety.

## 10 BACKGROUND OF THE INVENTION

Patients with relapsed and chemotherapy-refractory acute lymphocytic leukemia (ALL) have a poor prognosis despite the use of aggressive therapies such as allogeneic hematopoietic stem cell transplantation (Barrett et al, 1994, N Engl J Med 331:1253-8; Gokbuget et al, 2012, Blood 120:2032-41) and bi-specific CD19 antibody fragments (Bargou et al, 2008, Science 321:974-7). Chimeric antigen receptor modified T cells targeting lineage-specific antigens CD19 and CD20 have been reported to be effective in adults with CLL and B-cell lymphomas (Till et al, 2008, Blood 112:2261-71; Kochenderfer et al, 2010, Blood 116:4099-102; Brentjens et al, 2011, Blood 118:4817-28; Porter et al, 2011, N Engl J Med 365:725-33; Kalos et al, 2011, Science Translational Medicine 3:95ra73; Savoldo et al, 2011, J Clin Invest 121:1822-5). However, the effects of CAR T cells on ALL blasts, a more immature leukemia with a more rapid progression, have not been fully investigated.

Delayed onset of the tumor lysis syndrome and cytokine secretion, combined with vigorous in vivo chimeric antigen receptor T-cell expansion has been reported (Porter et al, 2011, N Engl J Med 365:725-33; Kalos et al, 2011, Science Translational Medicine 3:95ra73). However, the effects of cytokine secretion and disorders associated with in vivo chimeric antigen receptor T-cell expansion have not been fully investigated.

Thus, there is an urgent need in the art for compositions and methods  
30 for treatment of cancer using CARs and addressing toxicity of the CARs. The present  
invention addresses this need.

## SUMMARY OF THE INVENTION

The invention provides a method of treating a patient having a disease, disorder or condition associated with an elevated expression of a tumor antigen. In one embodiment, the method comprises administering a first-line therapy and a  
 5 second-line therapy to a patient in need thereof, wherein the first line therapy comprises administering to the patient an effective amount of a cell genetically modified to express a CAR, wherein the CAR comprises an antigen binding domain, a transmembrane domain, and an intracellular signaling domain.

In one embodiment, following the administration of the first-line  
 10 therapy, cytokine levels in the patient are monitored to determine the appropriate type of second-line therapy to be administered to the patient and the appropriate second-line therapy is administered to the patient in need thereof.

In one embodiment, an increase in the level of a cytokine identifies a type of cytokine inhibitory therapy to be administered to the patient in need thereof.

15 In one embodiment, the cytokine is selected from the group consisting of IL-1 $\beta$ , IL-2, IL-4, IL-5, IL-6, IL-8, IL-10, IL-12, IL-13, IL-15, IL-17, IL-1Ra, IL-2R, IFN- $\alpha$ , IFN- $\gamma$ , MIP-1 $\alpha$ , MIP-1 $\beta$ , MCP-1, TNF $\alpha$ , GM-CSF, G-CSF, CXCL9, CXCL10, CXCR factors, VEGF, RANTES, EOTAXIN, EGF, HGF, FGF- $\beta$ , CD40, CD40L, ferritin, and any combination thereof.

20 In one embodiment, the cytokine inhibitory therapy is selected from the group consisting of a small interfering RNA (siRNA), a microRNA, an antisense nucleic acid, a ribozyme, an expression vector encoding a transdominant negative mutant, an antibody, a peptide, a small molecule, a cytokine inhibitory drug, and any combination thereof.

25 In one embodiment, the cytokine levels are monitored by detecting the protein level of the cytokine in a biological sample from the patient.

In one embodiment, the cytokine levels are monitored by detecting the nucleic acid level of the cytokine in a biological sample from the patient.

The invention provides a method of reducing or avoiding an adverse  
 30 effect associated with the administration of a cell genetically modified to express a CAR, wherein the CAR comprises an antigen binding domain, a transmembrane domain, and an intracellular signaling domain, the method comprising monitoring the levels of a cytokine in a patient to determine the appropriate type of cytokine therapy

to be administered to the patient and administering the appropriate cytokine therapy to the patient.

In one embodiment, an increase in the level of a cytokine identifies a type of cytokine inhibitory therapy to be administered to the patient.

5 In one embodiment, the cytokine is selected from the group consisting of IL-1 $\beta$ , IL-2, IL-4, IL-5, IL-6, IL-8, IL-10, IL-12, IL-13, IL-15, IL-17, IL-1Ra, IL-2R, IFN- $\alpha$ , IFN- $\gamma$ , MIP-1 $\alpha$ , MIP-1 $\beta$ , MCP-1, TNF $\alpha$ , GM-CSF, G-CSF, CXCL9, CXCL10, CXCR factors, VEGF, RANTES, EOTAXIN, EGF, HGF, FGF- $\beta$ , CD40, CD40L, ferritin, and any combination thereof.

10 In one embodiment, the cytokine inhibitory therapy is selected from the group consisting of a small interfering RNA (siRNA), a microRNA, an antisense nucleic acid, a ribozyme, an expression vector encoding a transdominant negative mutant, an intracellular antibody, a peptide, a small molecule, a cytokine inhibitory drug, and any combination thereof.

15 In one embodiment, the cytokine levels are monitored by detecting the protein level of the cytokine in a biological sample from the patient.

In one embodiment, the cytokine levels are monitored by detecting the nucleic acid level of the cytokine in a biological sample from the patient.

## 20 BRIEF DESCRIPTION OF THE DRAWINGS

The following detailed description of preferred embodiments of the invention will be better understood when read in conjunction with the appended drawings. For the purpose of illustrating the invention, there are shown in the drawings embodiments which are presently preferred. It should be understood,  
25 however, that the invention is not limited to the precise arrangements and instrumentalities of the embodiments shown in the drawings.

Figure 1 is an image demonstrating serum cytokine levels in four different patients. All patients exhibited cytokine release, including IL-6.

30 Figure 2 is an image depicting serum cytokines plotted in a representative patient. The patient was critically ill on days 5 to 7, and only began to improve following tocilizumab administration.

Figure 3 is an image demonstrating that antibody interventions do not impact CART 19 cellular functionality as measured for markers of T cell activity (perforin and IFN- $\gamma$ ).

Figure 4, comprising Figures 4A through 4C, is a series of images depicting clinical responses. Figure 4A shows two children with multiply-relapsed chemotherapy-refractory CD 19+ B cell precursor acute lymphoblastic leukemia who were treated with CTL019 cells, infused on Day 0. Changes in serum lactate dehydrogenase (LDH) and body temperature after CTL019 infusion, with maximum temperature per 24 hour period demarcated with circles. CHOP-100 was given methylprednisolone starting on day 5 at 2mg/kg/day, tapered to off by day 12. On the morning of day 7, etanercept was given 0.8 mg/kg x 1. At 6pm in the evening of day 7, tocilizumab 8 mg/kg x 1 was administered. A transient improvement in pyrexia occurred with administration of corticosteroids on day 5 in CHOP-100, with complete resolution of fevers occurring after administration of cytokine-directed therapy consisting of etanercept and tocilizumab on day 8. Figure 4B shows serum cytokines and inflammatory markers measured at frequent time points after CTL019 infusion. Cytokine values are shown using a semi-logarithmic plot with fold-change from baseline. Baseline (Day 0 pre-infusion) values (pg/ml serum) for each analyte were (CHOP-100, CHOP-101): IL1-  $\beta$ : (0.9, 0.2); IL-6: (4.3, 1.9); TNF- $\alpha$ : (1.5, 0.4); IL2Ra: (418.8, 205.7); IL-2: (0.7, 0.4); IL-10 (9.9, 2.3); IL1Ra: (43.9, 27.9). Both patients developed pronounced elevations in a number of cytokines and cytokine receptors, including soluble interleukin 1A and 2 receptor (IL-1RA and IL-2R), interleukins 2, 6 and 10 (IL-2, IL-6 and IL-10), tumor necrosis factor- $\alpha$  (TNF- $\alpha$ ), and interferon- $\gamma$  (INF- $\gamma$ ). Figure 4C shows changes in circulating absolute neutrophil count (ANC), absolute lymphocyte count (ALC) and white blood cell (WBC) count. Of note, the increase in the ALC was primarily composed of activated CT019 T lymphocytes.

Figure 5, comprising Figures 5A through 5D, is a series of imaged depicting expansion and visualization of CTL019 cells in peripheral blood, bone marrow and CSF. Figure 5A shows flow cytometric analysis of peripheral blood stained with antibodies to detect CD3 and the anti-CD 19 CAR. Depicted are the percent of CD3 cells expressing the CAR in CHOP-100 and CHOP-101. Figure 5B shows the presence of CTL019 T cells in peripheral blood, bone marrow, and CSF by quantitative real-time PCR. Genomic DNA was isolated from whole blood, bone marrow aspirates and CSF collected at serial time points before and after CTL019 infusion. Figure 5C shows flow cytometric detection of CTL019 cells in CSF collected from CHOP-100 and CHOP-101. Figure 5D shows images of activated large granular lymphocytes in Wright-stained smears of the peripheral blood and cytopins

of the CSF.

Figure 6 is an image showing CD 19 expression at baseline and at relapse in CHOP-101. Bone marrow samples from CHOP-101 were obtained prior to CTL019 infusion and at time of relapse 2 months later. Mononuclear cells isolated from marrow samples were stained for CD45, CD34 and CD 19 and analyzed on an Accuri C6 flow cytometer. After gating on live cells, the blast gate (CD45+ SSC low) was subgated on CD34+ cells and histograms generated for CD 19 expression. Division line represents threshold for the same gating on isotype controls. Pre-therapy blasts have a range of distribution of CD 19, with a small population of very dim staining cells seen as the tail of the left histogram at 102 on the X-axis. The relapse sample does not have any CD19 positive blasts. Analysis of CD19 expression on the pre-treatment blast population revealed a small population of CD 19 dim or negative cells. The mean fluorescence intensity (MFI) of this small population of cells was 187 (left panel), similar to the MFI of the anti-CD 19-stained relapsed blast cells (201, right panel). Pre-therapy marrow sample was hypocellular with 10% blasts and relapse marrow sample was normocellular with 68% blasts, accounting for differences in events available for acquisition.

Figure 7 is an image showing induction of remission in bone marrow in CHOP-101 on day +23 after CTL019 infusion. Clinical immunophenotyping report for CHOP-101 at baseline (Top panel) and at day +23 (Bottom panel). Cells were stained for CD10, CD19, CD20, CD34, CD38 and CD58. Flow cytometry was done after lysis of the red blood cells. The report on day +23 indicated that the white blood cells consisted of 42.0 % lymphocytes, 6.0 % monocytes, 50.3 % myeloid forms, 0.17 % myeloid blasts and no viable lymphoid progenitors. There was no convincing immunophenotypic evidence of residual precursor B cell lymphoblastic leukemia/lymphoma by flow cytometry. Essentially no viable B cells were identified.

Figure 8 is an image depicting in vivo expansion and persistence of CTL019 cells in blood. The number of white blood cells (WBC), CD3+ T cells, and CTL019 cells in blood is shown for CHOP- 100 and CHOP-101. Cell numbers are shown on a semi-logarithmic plot.

Figure 9, comprising Figures 9A and 9B, is a series of images demonstrating that subjects had an elimination of CD 19 positive cells in bone marrow and blood within 1 month after CTL019 infusion. Figure 9A shows persistent B cell aplasia in CHOP- 100. The top panel shows a predominant population of leukemic

blast cells in bone marrow aspirated from CHOP- 100 expressing CD 19 and CD20 on day +6. This population is absent at day +23 and 6 months. Figure 9B shows B cell aplasia and emergence of CD 19 escape variant cells in CHOP-101. Flow cytometric analysis of bone marrow aspirates from CHOP-101 stained with anti-CD45, CD34 and CD19. In the bottom row, side scatter and the CD45 dim positive cells were used to identify leukemic cells that express variable amounts of CD34 and CD 19 at baseline. Only CD 19 negative blasts were detected on day 64. Numerical values in the top panel represent the fraction of the total leukocytes represented in each quadrant. Numerical values in the lower panel represent the percentage from the total leukocytes represented in the CD45dim/SS low gate.

Figure 10 is a graph depicting the levels of ferritin present in the patient following receipt of CAR T cells.

Figure 11 is a graph depicting the levels of myoglobin present in the patient following receipt of CAR T cells.

Figure 12 is a graph depicting the levels of plasminogen activator inhibitor-1 (PAI-1) present in the patient following receipt of CAR T cells.

#### DETAILED DESCRIPTION

The invention relates to compositions and methods for treating cancer including but not limited to hematologic malignancies and solid tumors. The invention also encompasses methods of treating and preventing certain types of cancer, including primary and metastatic cancer, as well as cancers that are refractory or resistant to conventional chemotherapy. The methods comprise administering to a patient in need of such treatment or prevention a therapeutically or prophylactically effective amount of a T cell transduced to express a chimeric antigen receptor (CAR). CARs are molecules that combine antibody-based specificity for a desired antigen (e.g., tumor antigen) with a T cell receptor-activating intracellular domain to generate a chimeric protein that exhibits a specific anti-tumor cellular immune activity.

As part of the overall treatment regimen, the invention encompasses methods of managing certain cancers (e.g., preventing or prolonging their recurrence, or lengthening the time of remission) by evaluating the profile of soluble factors in patients post T cell infusion. Preferably, the profile of soluble factors includes evaluation of a cytokine profile. When the cytokine profile indicates an increase in a particular cytokine post T cell infusion compared to pre T cell infusion, a skilled

artisan can elect to administer to the patient in need of such management an effective amount of a cytokine inhibitory compound or a pharmaceutically acceptable salt, solvate, hydrate, stereoisomer, clathrate, or pro drug thereof to manage the elevated levels of the cytokine post T cell infusion.

The present invention is partly based on the discovery that the identify of a unique combination of factors whose modulation from baseline or pre-existing levels at baseline can help track T cell activation, target activity, and potential harmful side effects following CAR T cell infusion in order to help manage the treatment of the cancer. Exemplary factors include but are not limited to IL-1 $\beta$ , IL-2, IL-4, IL-5, IL-6, IL-8, IL-10, IL-12, IL-13, IL-15, IL-17, IL-18, IL-21, IL-22, IL-23, IL-24, IL-25, IL-26, IL-27, IL-28, IL-29, IL-30, IL-31, IL-32, IL-33, IL-34, IL-35, IL-36, IL-37, IL-38, IL-39, IL-40, IL-41, IL-42, IL-43, IL-44, IL-45, IL-46, IL-47, IL-48, IL-49, IL-50, IL-51, IL-52, IL-53, IL-54, IL-55, IL-56, IL-57, IL-58, IL-59, IL-60, IL-61, IL-62, IL-63, IL-64, IL-65, IL-66, IL-67, IL-68, IL-69, IL-70, IL-71, IL-72, IL-73, IL-74, IL-75, IL-76, IL-77, IL-78, IL-79, IL-80, IL-81, IL-82, IL-83, IL-84, IL-85, IL-86, IL-87, IL-88, IL-89, IL-90, IL-91, IL-92, IL-93, IL-94, IL-95, IL-96, IL-97, IL-98, IL-99, IL-100, IL-101, IL-102, IL-103, IL-104, IL-105, IL-106, IL-107, IL-108, IL-109, IL-110, IL-111, IL-112, IL-113, IL-114, IL-115, IL-116, IL-117, IL-118, IL-119, IL-120, IL-121, IL-122, IL-123, IL-124, IL-125, IL-126, IL-127, IL-128, IL-129, IL-130, IL-131, IL-132, IL-133, IL-134, IL-135, IL-136, IL-137, IL-138, IL-139, IL-140, IL-141, IL-142, IL-143, IL-144, IL-145, IL-146, IL-147, IL-148, IL-149, IL-150, IL-151, IL-152, IL-153, IL-154, IL-155, IL-156, IL-157, IL-158, IL-159, IL-160, IL-161, IL-162, IL-163, IL-164, IL-165, IL-166, IL-167, IL-168, IL-169, IL-170, IL-171, IL-172, IL-173, IL-174, IL-175, IL-176, IL-177, IL-178, IL-179, IL-180, IL-181, IL-182, IL-183, IL-184, IL-185, IL-186, IL-187, IL-188, IL-189, IL-190, IL-191, IL-192, IL-193, IL-194, IL-195, IL-196, IL-197, IL-198, IL-199, IL-200, IL-201, IL-202, IL-203, IL-204, IL-205, IL-206, IL-207, IL-208, IL-209, IL-210, IL-211, IL-212, IL-213, IL-214, IL-215, IL-216, IL-217, IL-218, IL-219, IL-220, IL-221, IL-222, IL-223, IL-224, IL-225, IL-226, IL-227, IL-228, IL-229, IL-230, IL-231, IL-232, IL-233, IL-234, IL-235, IL-236, IL-237, IL-238, IL-239, IL-240, IL-241, IL-242, IL-243, IL-244, IL-245, IL-246, IL-247, IL-248, IL-249, IL-250, IL-251, IL-252, IL-253, IL-254, IL-255, IL-256, IL-257, IL-258, IL-259, IL-260, IL-261, IL-262, IL-263, IL-264, IL-265, IL-266, IL-267, IL-268, IL-269, IL-270, IL-271, IL-272, IL-273, IL-274, IL-275, IL-276, IL-277, IL-278, IL-279, IL-280, IL-281, IL-282, IL-283, IL-284, IL-285, IL-286, IL-287, IL-288, IL-289, IL-290, IL-291, IL-292, IL-293, IL-294, IL-295, IL-296, IL-297, IL-298, IL-299, IL-300, IL-301, IL-302, IL-303, IL-304, IL-305, IL-306, IL-307, IL-308, IL-309, IL-310, IL-311, IL-312, IL-313, IL-314, IL-315, IL-316, IL-317, IL-318, IL-319, IL-320, IL-321, IL-322, IL-323, IL-324, IL-325, IL-326, IL-327, IL-328, IL-329, IL-330, IL-331, IL-332, IL-333, IL-334, IL-335, IL-336, IL-337, IL-338, IL-339, IL-340, IL-341, IL-342, IL-343, IL-344, IL-345, IL-346, IL-347, IL-348, IL-349, IL-350, IL-351, IL-352, IL-353, IL-354, IL-355, IL-356, IL-357, IL-358, IL-359, IL-360, IL-361, IL-362, IL-363, IL-364, IL-365, IL-366, IL-367, IL-368, IL-369, IL-370, IL-371, IL-372, IL-373, IL-374, IL-375, IL-376, IL-377, IL-378, IL-379, IL-380, IL-381, IL-382, IL-383, IL-384, IL-385, IL-386, IL-387, IL-388, IL-389, IL-390, IL-391, IL-392, IL-393, IL-394, IL-395, IL-396, IL-397, IL-398, IL-399, IL-400, IL-401, IL-402, IL-403, IL-404, IL-405, IL-406, IL-407, IL-408, IL-409, IL-410, IL-411, IL-412, IL-413, IL-414, IL-415, IL-416, IL-417, IL-418, IL-419, IL-420, IL-421, IL-422, IL-423, IL-424, IL-425, IL-426, IL-427, IL-428, IL-429, IL-430, IL-431, IL-432, IL-433, IL-434, IL-435, IL-436, IL-437, IL-438, IL-439, IL-440, IL-441, IL-442, IL-443, IL-444, IL-445, IL-446, IL-447, IL-448, IL-449, IL-450, IL-451, IL-452, IL-453, IL-454, IL-455, IL-456, IL-457, IL-458, IL-459, IL-460, IL-461, IL-462, IL-463, IL-464, IL-465, IL-466, IL-467, IL-468, IL-469, IL-470, IL-471, IL-472, IL-473, IL-474, IL-475, IL-476, IL-477, IL-478, IL-479, IL-480, IL-481, IL-482, IL-483, IL-484, IL-485, IL-486, IL-487, IL-488, IL-489, IL-490, IL-491, IL-492, IL-493, IL-494, IL-495, IL-496, IL-497, IL-498, IL-499, IL-500, IL-501, IL-502, IL-503, IL-504, IL-505, IL-506, IL-507, IL-508, IL-509, IL-510, IL-511, IL-512, IL-513, IL-514, IL-515, IL-516, IL-517, IL-518, IL-519, IL-520, IL-521, IL-522, IL-523, IL-524, IL-525, IL-526, IL-527, IL-528, IL-529, IL-530, IL-531, IL-532, IL-533, IL-534, IL-535, IL-536, IL-537, IL-538, IL-539, IL-540, IL-541, IL-542, IL-543, IL-544, IL-545, IL-546, IL-547, IL-548, IL-549, IL-550, IL-551, IL-552, IL-553, IL-554, IL-555, IL-556, IL-557, IL-558, IL-559, IL-560, IL-561, IL-562, IL-563, IL-564, IL-565, IL-566, IL-567, IL-568, IL-569, IL-570, IL-571, IL-572, IL-573, IL-574, IL-575, IL-576, IL-577, IL-578, IL-579, IL-580, IL-581, IL-582, IL-583, IL-584, IL-585, IL-586, IL-587, IL-588, IL-589, IL-590, IL-591, IL-592, IL-593, IL-594, IL-595, IL-596, IL-597, IL-598, IL-599, IL-600, IL-601, IL-602, IL-603, IL-604, IL-605, IL-606, IL-607, IL-608, IL-609, IL-610, IL-611, IL-612, IL-613, IL-614, IL-615, IL-616, IL-617, IL-618, IL-619, IL-620, IL-621, IL-622, IL-623, IL-624, IL-625, IL-626, IL-627, IL-628, IL-629, IL-630, IL-631, IL-632, IL-633, IL-634, IL-635, IL-636, IL-637, IL-638, IL-639, IL-640, IL-641, IL-642, IL-643, IL-644, IL-645, IL-646, IL-647, IL-648, IL-649, IL-650, IL-651, IL-652, IL-653, IL-654, IL-655, IL-656, IL-657, IL-658, IL-659, IL-660, IL-661, IL-662, IL-663, IL-664, IL-665, IL-666, IL-667, IL-668, IL-669, IL-670, IL-671, IL-672, IL-673, IL-674, IL-675, IL-676, IL-677, IL-678, IL-679, IL-680, IL-681, IL-682, IL-683, IL-684, IL-685, IL-686, IL-687, IL-688, IL-689, IL-690, IL-691, IL-692, IL-693, IL-694, IL-

The present invention relates to a strategy of adoptive cell transfer of T cells transduced to express a chimeric antigen receptor (CAR) in combination with toxicity management, where a profile of soluble factors from a post T cell infusion patient is generated and a therapy directed against the elevated soluble factor is carried out in order to treat the cancer. For example, generating a real time soluble factor profile allows for intervention of the elevated soluble factors with the appropriate inhibitor in order to bring the levels down to normal levels.

20 In one embodiment, the CAR of the invention comprises an extracellular domain having an antigen recognition domain that targets a desired antigen, a transmembrane domain, and a cytoplasmic domain. The invention is not limited to a specific CAR. Rather, any CAR that targets a desired antigen can be used in the present invention. Compositions and methods of making CARs have been  
25 described in PCT/US1 1/64191, which is incorporated by reference in its entirety herein.

In some embodiments of any of the methods above, the methods result in a measurable reduction in tumor size or evidence of disease or disease progression, complete response, partial response, stable disease, increase or elongation of progression free survival, increase or elongation of overall survival, or reduction in toxicity.

### Definitions

Unless defined otherwise, all technical and scientific terms used herein have the same meaning as commonly understood by one of ordinary skill in the art to which the invention pertains. Although any methods and materials similar or  
5 equivalent to those described herein can be used in the practice for testing of the present invention, the preferred materials and methods are described herein. In describing and claiming the present invention, the following terminology will be used.

It is also to be understood that the terminology used herein is for the purpose of describing particular embodiments only, and is not intended to be limiting.

10 The articles "a" and "an" are used herein to refer to one or to more than one (*i.e.*, to at least one) of the grammatical object of the article. By way of example, "an element" means one element or more than one element.

"About" as used herein when referring to a measurable value such as an amount, a temporal duration, and the like, is meant to encompass variations of  
15  $\pm 20\%$  or  $\pm 10\%$ , in some instances  $\pm 5\%$ , in some instances  $\pm 1\%$ , and in some instances  $\pm 0.1\%$  from the specified value, as such variations are appropriate to perform the disclosed methods.

"Activation," as used herein, refers to the state of a T cell that has been sufficiently stimulated to induce detectable cellular proliferation. Activation can also  
20 be associated with induced cytokine production, and detectable effector functions. The term "activated T cells" refers to, among other things, T cells that are undergoing cell division.

"Activators" or "agonists" of a soluble factor are used herein to refer to molecules of agents capable of activating or increasing the levels of the soluble factor.  
25 Activators are compounds that increase, promote, induce activation, activate, or upregulate the activity or expression of soluble factor, *e.g.*, agonists. Assays for detecting activators include, *e.g.*, expressing the soluble factor *in vitro*, in cells, or cell membranes, applying putative agonist compounds, and then determining the functional effects on activity of the soluble factor, as described elsewhere herein.

30 The term "antibody," as used herein, refers to an immunoglobulin molecule which specifically binds with an antigen. Antibodies can be intact immunoglobulins derived from natural sources or from recombinant sources and can be immunoreactive portions of intact immunoglobulins. Antibodies are often tetramers of immunoglobulin molecules. The antibodies in the present invention may

exist in a variety of forms including, for example, polyclonal antibodies, monoclonal antibodies, Fv, Fab and F(ab)<sub>2</sub>, as well as single chain antibodies and humanized antibodies (Harlow et al, 1999, In: Using Antibodies: A Laboratory Manual, Cold Spring Harbor Laboratory Press, NY; Harlow et al, 1989, In: Antibodies: A Laboratory Manual, Cold Spring Harbor, New York; Houston et al, 1988, Proc. Natl. Acad. Sci. USA 85:5879-5883; Bird et al., 1988, Science 242:423-426).

The term "antibody fragment" refers to a portion of an intact antibody and refers to the antigenic determining variable regions of an intact antibody. Examples of antibody fragments include, but are not limited to, Fab, Fab', F(ab')<sub>2</sub>, and Fv fragments, linear antibodies, scFv antibodies, and multispecific antibodies formed from antibody fragments.

The term "antigen" or "Ag" as used herein is defined as a molecule that provokes an immune response. This immune response may involve either antibody production, or the activation of specific immunologically-competent cells, or both. The skilled artisan will understand that any macromolecule, including virtually all proteins or peptides, can serve as an antigen. Furthermore, antigens can be derived from recombinant or genomic DNA. A skilled artisan will understand that any DNA, which comprises a nucleotide sequences or a partial nucleotide sequence encoding a protein that elicits an immune response therefore encodes an "antigen" as that term is used herein. Furthermore, one skilled in the art will understand that an antigen need not be encoded solely by a full length nucleotide sequence of a gene. It is readily apparent that the present invention includes, but is not limited to, the use of partial nucleotide sequences of more than one gene and that these nucleotide sequences are arranged in various combinations to elicit the desired immune response. Moreover, a skilled artisan will understand that an antigen need not be encoded by a "gene" at all. It is readily apparent that an antigen can be generated synthesized or can be derived from a biological sample. Such a biological sample can include, but is not limited to a tissue sample, a tumor sample, a cell or a biological fluid.

The term "auto-antigen" means, in accordance with the present invention, any self-antigen which is recognized by the immune system as if it were foreign. Auto-antigens comprise, but are not limited to, cellular proteins, phosphoproteins, cellular surface proteins, cellular lipids, nucleic acids, glycoproteins, including cell surface receptors.

The term "autoimmune disease" as used herein is defined as a disorder that results from an autoimmune response. An autoimmune disease is the result of an inappropriate and excessive response to a self-antigen. Examples of autoimmune diseases include but are not limited to, Addison's disease, alopecia areata, ankylosing  
5 spondylitis, autoimmune hepatitis, autoimmune parotitis, Crohn's disease, diabetes (Type I), dystrophic epidermolysis bullosa, epididymitis, glomerulonephritis, Graves' disease, Guillain-Barré syndrome, Hashimoto's disease, hemolytic anemia, systemic lupus erythematosus, multiple sclerosis, myasthenia gravis, pemphigus vulgaris, psoriasis, rheumatic fever, rheumatoid arthritis, sarcoidosis, scleroderma, Sjögren's  
10 syndrome, spondyloarthropathies, thyroiditis, vasculitis, vitiligo, myxedema, pernicious anemia, ulcerative colitis, among others.

As used herein, the term "autologous" is meant to refer to any material derived from the same individual to which it is later to be re-introduced into the individual.

15 "Allogeneic" refers to a graft derived from a different animal of the same species.

"Xenogeneic" refers to a graft derived from an animal of a different species.

The term "cancer" as used herein is defined as disease characterized by  
20 the rapid and uncontrolled growth of aberrant cells. Cancer cells can spread locally or through the bloodstream and lymphatic system to other parts of the body. Examples of various cancers include but are not limited to, breast cancer, prostate cancer, ovarian cancer, cervical cancer, skin cancer, pancreatic cancer, colorectal cancer, renal cancer, liver cancer, brain cancer, lymphoma, leukemia, lung cancer and the like.

25 As used herein, by "combination therapy" is meant that a first agent is administered in conjunction with another agent. "In conjunction with" refers to administration of one treatment modality in addition to another treatment modality. As such, "in conjunction with" refers to administration of one treatment modality before, during, or after delivery of the other treatment modality to the individual. Such  
30 combinations are considered to be part of a single treatment regimen or regime.

As used herein, the term "concurrent administration" means that the administration of the first therapy and that of a second therapy in a combination therapy overlap with each other.

"Co-stimulatory ligand," as the term is used herein, includes a molecule on an antigen presenting cell (e.g., an aAPC, dendritic cell, B cell, and the like) that specifically binds a cognate co-stimulatory molecule on a T cell, thereby providing a signal which, in addition to the primary signal provided by, for instance, binding of a TCR/CD3 complex with an MHC molecule loaded with peptide, mediates a T cell response, including, but not limited to, proliferation, activation, differentiation, and the like. A co-stimulatory ligand can include, but is not limited to, CD7, B7-1 (CD80), B7-2 (CD86), PD-L1, PD-L2, 4-1BBL, OX40L, inducible costimulatory ligand (ICOS-L), intercellular adhesion molecule (ICAM), CD30L, CD40, CD70, CD83, HLA-G, MICA, MICB, HVEM, lymphotoxin beta receptor, 3/TR6, ILT3, ILT4, HVEM, an agonist or antibody that binds Toll ligand receptor and a ligand that specifically binds with B7-H3. A co-stimulatory ligand also encompasses, *inter alia*, an antibody that specifically binds with a co-stimulatory molecule present on a T cell, such as, but not limited to, CD27, CD28, 4-1BB, OX40, CD30, CD40, PD-1, ICOS, lymphocyte function-associated antigen-1 (LFA-1), CD2, CD7, LIGHT, NKG2C, B7-H3, and a ligand that specifically binds with CD83.

A "co-stimulatory molecule" refers to the cognate binding partner on a T cell that specifically binds with a co-stimulatory ligand, thereby mediating a co-stimulatory response by the T cell, such as, but not limited to, proliferation. Co-stimulatory molecules include, but are not limited to an MHC class I molecule, BTLA and a Toll ligand receptor.

A "co-stimulatory signal," as used herein, refers to a signal, which in combination with a primary signal, such as TCR/CD3 ligation, leads to T cell proliferation and/or upregulation or downregulation of key molecules.

A "disease" is a state of health of an animal wherein the animal cannot maintain homeostasis, and wherein if the disease is not ameliorated then the animal's health continues to deteriorate. In contrast, a "disorder" in an animal is a state of health in which the animal is able to maintain homeostasis, but in which the animal's state of health is less favorable than it would be in the absence of the disorder. Left untreated, a disorder does not necessarily cause a further decrease in the animal's state of health.

An "effective amount" as used herein, means an amount which provides a therapeutic or prophylactic benefit.

As used herein "endogenous" refers to any material from or produced inside an organism, cell, tissue or system.

As used herein, the term "exogenous" refers to any material introduced to an organism, cell, tissue or system that was produced outside the organism, cell,  
5 tissue or system.

The term "expression" as used herein is defined as the transcription and/or translation of a particular nucleotide sequence driven by its promoter.

"Expression vector" refers to a vector comprising a recombinant polynucleotide comprising expression control sequences operatively linked to a  
10 nucleotide sequence to be expressed. An expression vector comprises sufficient cis-acting elements for expression; other elements for expression can be supplied by the host cell or in an in vitro expression system. Expression vectors include all those known in the art, such as cosmids, plasmids (*e.g.*, naked or contained in liposomes) and viruses (*e.g.*, lentiviruses, retroviruses, adenoviruses, and adeno-associated  
15 viruses) that incorporate the recombinant polynucleotide.

"Homologous" refers to the sequence similarity or sequence identity between two polypeptides or between two nucleic acid molecules. When a position in both of the two compared sequences is occupied by the same base or amino acid monomer subunit, *e.g.*, if a position in each of two DNA molecules is occupied by  
20 adenine, then the molecules are homologous at that position. The percent of homology between two sequences is a function of the number of matching or homologous positions shared by the two sequences divided by the number of positions compared X 100. For example, if 6 of 10 of the positions in two sequences are matched or homologous then the two sequences are 60% homologous. By way of example, the  
25 DNA sequences ATTGCC and TATGGC share 50% homology. Generally, a comparison is made when two sequences are aligned to give maximum homology.

The term "immunoglobulin" or "Ig," as used herein, is defined as a class of proteins, which function as antibodies. Antibodies expressed by B cells are sometimes referred to as the BCR (B cell receptor) or antigen receptor. The five  
30 members included in this class of proteins are IgA, IgG, IgM, IgD, and IgE. IgA is the primary antibody that is present in body secretions, such as saliva, tears, breast milk, gastrointestinal secretions and mucus secretions of the respiratory and genitourinary tracts. IgG is the most common circulating antibody. IgM is the main immunoglobulin produced in the primary immune response in most subjects. It is the most efficient

immunoglobulin in agglutination, complement fixation, and other antibody responses, and is important in defense against bacteria and viruses. IgD is the immunoglobulin that has no known antibody function, but may serve as an antigen receptor. IgE is the immunoglobulin that mediates immediate hypersensitivity by causing release of  
5 mediators from mast cells and basophils upon exposure to allergen.

As used herein, the term "immune response" includes T cell mediated and/or B cell mediated immune responses. Exemplary immune responses include T cell responses, e.g., cytokine production and cellular cytotoxicity. In addition, the term immune response includes immune responses that are indirectly effected by T  
10 cell activation, e.g., antibody production (humoral responses) and activation of cytokine responsive cells, e.g., macrophages. Immune cells involved in the immune response include lymphocytes, such as B cells and T cells (CD4+, CD8+, Th1 and Th2 cells); antigen presenting cells (e.g., professional antigen presenting cells such as dendritic cells, macrophages, B lymphocytes, Langerhans cells, and non-professional  
15 antigen presenting cells such as keratinocytes, endothelial cells, astrocytes, fibroblasts, oligodendrocytes); natural killer cells; myeloid cells, such as macrophages, eosinophils, mast cells, basophils, and granulocytes.

"Inhibitors" or "antagonists" of a soluble factor are used herein to refer to molecules of agents capable of inhibiting, inactivating or reducing the levels of the  
20 soluble factor. Inhibitors are compounds that, e.g., bind to, partially or totally block activity, decrease, prevent, delay activation, inactivate, desensitize, or down regulate the activity or expression of soluble factor, e.g., antagonists. Inhibitors include polypeptide inhibitors, such as antibodies, soluble receptors and the like, as well as nucleic acid inhibitors such as siRNA or antisense RNA, genetically modified  
25 versions of the soluble factor, e.g., versions with altered activity, as well as naturally occurring and synthetic soluble factor antagonists, small chemical molecules and the like. Assays for detecting inhibitors include, e.g., expressing the soluble factor in vitro, in cells, or cell membranes, applying putative antagonist compounds, and then determining the functional effects on activity of the soluble factor, as described  
30 elsewhere herein.

As used herein, an "instructional material" includes a publication, a recording, a diagram, or any other medium of expression which can be used to communicate the usefulness of the compositions and methods of the invention. The instructional material of the kit of the invention may, for example, be affixed to a

container which contains the nucleic acid, peptide, and/or composition of the invention or be shipped together with a container which contains the nucleic acid, peptide, and/or composition. Alternatively, the instructional material may be shipped separately from the container with the intention that the instructional material and the  
5 compound be used cooperatively by the recipient.

"Isolated" means altered or removed from the natural state. For example, a nucleic acid or a peptide naturally present in a living animal is not "isolated," but the same nucleic acid or peptide partially or completely separated from the coexisting materials of its natural state is "isolated." An isolated nucleic acid or  
10 protein can exist in substantially purified form, or can exist in a non-native environment such as, for example, a host cell.

A "lentivirus" as used herein refers to a genus of the Retroviridae family. Lentiviruses are unique among the retroviruses in being able to infect non-dividing cells; they can deliver a significant amount of genetic information into the  
15 DNA of the host cell, so they are one of the most efficient methods of a gene delivery vector. HIV, SIV, and FIV are all examples of lentiviruses. Vectors derived from lentiviruses offer the means to achieve significant levels of gene transfer in vivo.

The phrase "level of a soluble factor" in a biological sample as used herein typically refers to the amount of protein, protein fragment or peptide levels of the soluble factor that is present in a biological sample. A "level of a soluble factor"  
20 need not be quantified, but can simply be detected, e.g., a subjective, visual detection by a human, with or without comparison to a level from a control sample or a level expected of a control sample.

By the term "modulating," as used herein, is meant mediating a detectable increase or decrease in the level of a response in a subject compared with the level of a response in the subject in the absence of a treatment or compound, and/or compared with the level of a response in an otherwise identical but untreated subject. The term encompasses perturbing and/or affecting a native signal or response thereby mediating a beneficial therapeutic response in a subject, preferably, a human.  
25

"Parenteral" administration of an immunogenic composition includes, e.g., subcutaneous (s.c), intravenous (i.v.), intramuscular (i.m.), or intrasternal injection, or infusion techniques.  
30

The terms "patient," "subject," "individual," and the like are used interchangeably herein, and refer to any animal, or cells thereof whether in vitro or in

situ, amenable to the methods described herein. In certain non-limiting embodiments, the patient, subject or individual is a human.

The term "simultaneous administration," as used herein, means that a first therapy and second therapy in a combination therapy are administered with a time separation of no more than about 15 minutes, such as no more than about any of 10, 5, or 1 minutes. When the first and second therapies are administered simultaneously, the first and second therapies may be contained in the same composition (e.g., a composition comprising both a first and second therapy) or in separate compositions (e.g., a first therapy in one composition and a second therapy is contained in another composition).

The term "simultaneous administration," as used herein, means that a first therapy and second therapy in a combination therapy are administered with a time separation of no more than about 15 minutes, such as no more than about any of 10, 5, or 1 minutes. When the first and second therapies are administered simultaneously, the first and second therapies may be contained in the same composition (e.g., a composition comprising both a first and second therapy) or in separate compositions (e.g., a first therapy in one composition and a second therapy is contained in another composition).

By the term "specifically binds," as used herein with respect to an antibody, is meant an antibody which recognizes a specific antigen, but does not substantially recognize or bind other molecules in a sample. For example, an antibody that specifically binds to an antigen from one species may also bind to that antigen from one or more species. But, such cross-species reactivity does not itself alter the classification of an antibody as specific. In another example, an antibody that specifically binds to an antigen may also bind to different allelic forms of the antigen. However, such cross reactivity does not itself alter the classification of an antibody as specific. In some instances, the terms "specific binding" or "specifically binding," can be used in reference to the interaction of an antibody, a protein, or a peptide with a second chemical species, to mean that the interaction is dependent upon the presence of a particular structure (e.g., an antigenic determinant or epitope) on the chemical species; for example, an antibody recognizes and binds to a specific protein structure rather than to proteins generally. If an antibody is specific for epitope "A," the presence of a molecule containing epitope A (or free, unlabeled A), in a reaction

containing labeled "A" and the antibody, will reduce the amount of labeled A bound to the antibody.

By the term "stimulation," is meant a primary response induced by binding of a stimulatory molecule (e.g., a TCR/CD3 complex) with its cognate ligand thereby mediating a signal transduction event, such as, but not limited to, signal transduction via the TCR/CD3 complex. Stimulation can mediate altered expression of certain molecules, such as downregulation of TGF- $\beta$ , and/or reorganization of cytoskeletal structures, and the like.

A "stimulatory molecule," as the term is used herein, means a molecule on a T cell that specifically binds with a cognate stimulatory ligand present on an antigen presenting cell.

A "stimulatory ligand," as used herein, means a ligand that when present on an antigen presenting cell (e.g., an aAPC, a dendritic cell, a B-cell, and the like) can specifically bind with a cognate binding partner (referred to herein as a "stimulatory molecule") on a T cell, thereby mediating a primary response by the T cell, including, but not limited to, activation, initiation of an immune response, proliferation, and the like. Stimulatory ligands are well-known in the art and encompass, inter alia, an MHC Class I molecule loaded with a peptide, an anti-CD3 antibody, a superagonist anti-CD28 antibody, and a superagonist anti-CD2 antibody.

The term "subject" is intended to include living organisms in which an immune response can be elicited (e.g., mammals). Examples of subjects include humans, dogs, cats, mice, rats, and transgenic species thereof.

As used herein, a "substantially purified" cell is a cell that is essentially free of other cell types. A substantially purified cell also refers to a cell which has been separated from other cell types with which it is normally associated in its naturally occurring state. In some instances, a population of substantially purified cells refers to a homogenous population of cells. In other instances, this term refers simply to cell that have been separated from the cells with which they are naturally associated in their natural state. In some embodiments, the cells are cultured *in vitro*. In other embodiments, the cells are not cultured *in vitro*.

The term "therapeutic" as used herein means a treatment and/or prophylaxis. A therapeutic effect is obtained by suppression, remission, or eradication of a disease state.

The term "therapeutically effective amount" refers to the amount of the subject compound that will elicit the biological or medical response of a tissue, system, or subject that is being sought by the researcher, veterinarian, medical doctor or other clinician. The term "therapeutically effective amount" includes that amount of a compound that, when administered, is sufficient to prevent development of, or alleviate to some extent, one or more of the signs or symptoms of the disorder or disease being treated. The therapeutically effective amount will vary depending on the compound, the disease and its severity and the age, weight, etc., of the subject to be treated.

10                   A "transplant," as used herein, refers to cells, tissue, or an organ that is introduced into an individual. The source of the transplanted material can be cultured cells, cells from another individual, or cells from the same individual (e.g., after the cells are cultured in vitro). Exemplary organ transplants are kidney, liver, heart, lung, and pancreas.

15                   To "treat" a disease as the term is used herein, means to reduce the frequency or severity of at least one sign or symptom of a disease or disorder experienced by a subject.

                    The term "transfected" or "transformed" or "transduced" as used herein refers to a process by which exogenous nucleic acid is transferred or introduced into the host cell. A "transfected" or "transformed" or "transduced" cell is one which has been transfected, transformed or transduced with exogenous nucleic acid. The cell includes the primary subject cell and its progeny.

                    Ranges: throughout this disclosure, various aspects of the invention can be presented in a range format. It should be understood that the description in range format is merely for convenience and brevity and should not be construed as an inflexible limitation on the scope of the invention. Accordingly, the description of a range should be considered to have specifically disclosed all the possible subranges as well as individual numerical values within that range. For example, description of a range such as from 1 to 6 should be considered to have specifically disclosed subranges such as from 1 to 3, from 1 to 4, from 1 to 5, from 2 to 4, from 2 to 6, from 3 to 6 etc., as well as individual numbers within that range, for example, 1, 2, 2.7, 3, 4, 5, 5.3, and 6. This applies regardless of the breadth of the range.

Description

The present invention provides compositions and methods for treating cancer in a patient. In one embodiment, the treatment method comprises a first-line of therapy comprising administering the CAR of the invention into the patient to induce an anti-tumor immune response and monitoring the levels of soluble factors in the patient post T cell infusion to determine the type of second-line of therapy appropriate to treat the patient as a consequence of the first-line of therapy.

In one embodiment, the second-line of therapy comprises evaluating the profile of soluble factors in a patient following receipt of an infusion of the appropriate CAR T (referred elsewhere herein as "post T cell infusion") where when the soluble factor profile indicates an increase in a particular soluble factor post T cell infusion compared to pre T cell infusion, a skilled artisan can elect to administer to the patient in need of an effective amount of a soluble factor inhibitory compound in order to manage the elevated levels of the soluble factor post T cell infusion. Accordingly, the second-line of therapy in one embodiment includes administering a type of soluble factor inhibitory therapy to manage the elevated levels of certain soluble factors resulting from the first-line of therapy of using CAR T cells.

In yet another embodiment, the second-line of therapy relating to administering a soluble factor inhibitory compound to the patient can be combined with other conventionally therapies used to treat, prevent or manage diseases or disorders associated with, or characterized by, undesired angiogenesis. Examples of such conventional therapies include, but are not limited to, surgery, chemotherapy, radiation therapy, hormonal therapy, biological therapy and immunotherapy.

In one embodiment, the CAR of the invention can be engineered to comprise an extracellular domain having an antigen binding domain that targets tumor antigen fused to an intracellular signaling domain of the T cell antigen receptor complex zeta chain (e.g., CD3 zeta). An exemplary tumor antigen B cell antigen is CD19 because this antigen is expressed on malignant B cells. However, the invention is not limited to targeting CD19. Rather, the invention includes any tumor antigen binding moiety. The antigen binding moiety is preferably fused with an intracellular domain from one or more of a costimulatory molecule and a zeta chain. Preferably, the antigen binding moiety is fused with one or more intracellular domains selected from the group of a CD137 (4-1BB) signaling domain, a CD28 signaling domain, a CD3zeta signal domain, and any combination thereof.

In one embodiment, the CAR of the invention comprises a CD 137 (4-1BB) signaling domain. This is because the present invention is partly based on the discovery that CAR-mediated T-cell responses can be further enhanced with the addition of costimulatory domains. For example, inclusion of the CD137 (4-1BB) signaling domain significantly increased CAR mediated activity and *in vivo* persistence of CAR T cells compared to an otherwise identical CAR T cell not engineered to express CD 137 (4-1BB). However, the invention is not limited to a specific CAR. Rather, any CAR that targets a tumor antigen can be used in the present invention. Compositions and methods of making and using CARs have been described in PCT/US1 1/64191, which is incorporated by reference in its entirety herein.

#### Methods

The treatment regimen of the invention result in a measurable reduction in tumor size or evidence of disease or disease progression, complete response, partial response, stable disease, increase or elongation of progression free survival, increase or elongation of overall survival, or reduction in toxicity.

As part of the overall treatment regimen, the invention encompasses a first-line and a second-line therapy, wherein the first-line therapy comprises administering a CAR T cell of the invention to the patient in need thereof. The treatment regimen of the invention allows for the management of the cancer and treatment thereof by evaluating the soluble factor profile in patients post T cell infusion. An appropriate second-line therapy comprises administering an appropriate soluble factor inhibitor to the patient in order to reduce the elevated levels of the soluble factor resulting from the first-line therapy. In some instances, the appropriate second-line therapy comprises administering an appropriate soluble factor activator to the patient in order to increase the suppressed levels of the soluble factor resulting from the first-line therapy.

In one embodiment, an appropriate second-line therapy comprises administering an appropriate cytokine inhibitor to the patient in order to reduce the elevated levels of the cytokine resulting from the first-line therapy. In some instances, the appropriate second-line therapy comprises administering an appropriate cytokine activator to the patient in order to increase the suppressed levels of the cytokine resulting from the first-line therapy.

In one embodiment, differential levels are over expression (high expression) or under expression (low expression) as compared to the expression level of a normal or control cell, a given patient population, or with an internal control. In some embodiments, levels are compared between the patient and a normal individual, 5 between the patient post T cell infusion and pre T cell infusion, or between the patient post T cell infusion at a first time point and a second time point.

In one embodiment, the invention includes evaluating differential levels of one or more cytokines to generate a cytokine profile in a patient post T cell infusion in order to determine the type of cytokine therapy to be applied to the patient 10 for the purpose of regulating the cytokine level back to normal levels. The invention may therefore be applied to identify cytokine levels elevated as a result of the presence of the CAR T cells of the invention in the patient, which allows the specialized treatment of the patient with cytokine inhibitors to decrease the elevated levels of the cytokine. In another embodiment, invention may be applied to identify 15 cytokine levels decreased as a result of the presence of the CAR T cells of the invention in the patient, which allows the specialized treatment of the patient with cytokine activators to increase the diminished levels of the cytokine.

In one embodiment, cytokines levels that are elevated as a result of receiving a CAR T cell infusion include but are not limited to IL-1 $\beta$ , IL-2, IL-4, IL-5, 20 IL-6, IL-8, IL-10, IL-12, IL-13, IL-15, IL-17, IL-18, IL-1Ra, IL-2R, IFN- $\alpha$ , IFN- $\gamma$ , MIP-1 $\alpha$ , MIP-1 $\beta$ , MCP-1, TNF $\alpha$ , GM-CSF, G-CSF, CXCL9, CXCL10, CXCR factors, VEGF, RANTES, EOTAXIN, EGF, HGF, FGF- $\beta$ , CD40, CD40L, ferritin, and the like. However, the invention should not be limited to these listed cytokines. Rather, the invention includes any cytokine identified to be elevated in a patient as a result of 25 receiving a CAR T cell infusion.

In one embodiment, cytokines levels that are decreased as a result of receiving a CAR T cell infusion include but are not limited to IL-1 $\beta$ , IL-2, IL-4, IL-5, 30 IL-6, IL-8, IL-10, IL-12, IL-13, IL-15, IL-17, IL-18, IL-1Ra, IL-2R, IFN- $\alpha$ , IFN- $\gamma$ , MIP-1 $\alpha$ , MIP-1 $\beta$ , MCP-1, TNF $\alpha$ , GM-CSF, G-CSF, CXCL9, CXCL10, CXCR factors, VEGF, RANTES, EOTAXIN, EGF, HGF, FGF- $\beta$ , CD40, CD40L, ferritin, and the like. However, the invention should not be limited to these listed cytokines. Rather, the invention includes any cytokine identified to be decreased in a patient as a result of receiving a CAR T cell infusion.

Detecting a cytokine and treatment thereof

Although this section describes detection of a cytokine and treatment thereof as part of the second-line therapy, the invention encompasses detection of any soluble factor and treatment thereof as part of the second-line therapy. Therefore, the description in the context of a "cytokine" can equally be applied to a "soluble factor."

In one embodiment, as part of the second-line therapy, the invention includes methods of detecting levels of a cytokine in a patient that has received infusion of a CAR T cell of the invention. In some embodiments, the presence or level of a cytokine can be used to select a candidate treatment. In some other embodiments, the presence or levels of the cytokine can be used to determine the success during the course of or after treatment of the first-line, second-line, or both the first and second-line of therapy.

Biological samples in which the cytokine can be detected include, for example, serum. In some embodiments, biological samples include a tissue biopsy which may or may not have a liquid component.

Immunoassays can be used to qualitatively or quantitatively analyze the cytokine levels in a biological sample. A general overview of the applicable technology can be found in a number of readily available manuals, e.g., Harlow & Lane, Cold Spring Harbor Laboratory Press, Using Antibodies: A Laboratory Manual (1999).

In addition to using immunoassays to detect the levels of cytokines in a biological sample from a patient, assessment of cytokine expression and levels can be made based on the level of gene expression of the particular cytokines. RNA hybridization techniques for determining the presence and/or level of mRNA expression are well known to those of skill in the art and can be used to assess the presence or level of gene expression of the cytokine of interest.

In some embodiments, the methods of the present invention utilize selective binding partners of the cytokine to identify the presence or determine the levels of the cytokine in a biological sample. The selective binding partner to be used with the methods and kits of the present invention can be, for instance, an antibody. In some aspects, monoclonal antibodies to the particular cytokine can be used. In some other aspects, polyclonal antibodies to the particular cytokine can be employed to practice the methods and in the kits of the present invention.

Commercial antibodies to the cytokine are available and can be used with the methods and kits of the present invention. It is well known to those of skill in the art that the type, source and other aspects of an antibody to be used is a consideration to be made in light of the assay in which the antibody is used. In some instances, antibodies that will recognize its antigen target on a Western blot might not  
5 applicable to an ELISA or ELISpot assay and vice versa.

In some embodiments, the antibodies to be used for the assays of the present invention can be produced using techniques for producing monoclonal or polyclonal antibodies that are well known in the art (see, e.g., Coligan, Current  
10 Protocols in Immunology (1991); Harlow & Lane, supra; Goding, Monoclonal Antibodies: Principles and Practice (2d ed. 1986); and Kohler & Milstein, Nature 256:495-497 (1975). Such techniques include antibody preparation by selection of antibodies from libraries of recombinant antibodies in phage or similar vectors, as well as preparation of polyclonal and monoclonal antibodies by immunizing rabbits or  
15 mice (see, e.g., Huse et al, Science 246:1275-1281 (1989); Ward et al, Nature 341:544-546 (1989)). Such antibodies can be used for therapeutic and diagnostic applications, e.g., in the treatment and/or detection of any of the specific cytokine-associated diseases or conditions described herein.

Detection methods employing immunoassays are particularly suitable  
20 for practice at the point of patient care. Such methods allow for immediate diagnosis and/or prognostic evaluation of the patient. Point of care diagnostic systems are described, e.g., in U.S. Pat. No. 6,267,722 which is incorporated herein by reference. Other immunoassay formats are also available such that an evaluation of the biological sample can be performed without having to send the sample to a laboratory  
25 for evaluation. Typically these assays are formatted as solid assays where a reagent, e.g., an antibody is used to detect the cytokine. Exemplary test devices suitable for use with immunoassays such as assays of the present invention are described, for example, in U.S. Pat. Nos. 7,189,522; 6,818,455 and 6,656,745.

In some aspects, the present invention provides methods for detection  
30 of polynucleotide sequences which code for the cytokine in a biological sample. As noted above, a "biological sample" refers to a cell or population of cells or a quantity of tissue or fluid from a patient. Most often, the sample has been removed from a patient, but the term "biological sample" can also refer to cells or tissue analyzed in vivo, i.e., without removal from the patient. Typically, a "biological sample" will

contain cells from the patient, but the term can also refer to noncellular biological material.

In one embodiment, amplification-based assays are used to measure the level of a desired cytokine. In such an assay, nucleic acid sequences of the desired cytokine act as a template in an amplification reaction (e.g., Polymerase Chain Reaction, or PCR). In a quantitative amplification, the amount of amplification product will be proportional to the amount of template in the original sample. Comparison to appropriate controls provides a measure of the copy number of the cytokine associated gene. Methods of quantitative amplification are well known to those of skill in the art. Detailed protocols for quantitative PCR are provided, e.g., in Innis et al. (1990) PCR Protocols, A Guide to Methods and Applications, Academic Press, Inc. N.Y.). RT-PCR methods are well known to those of skill (see, e.g., Ausubel et al, supra). In some embodiments, quantitative RT-PCR, e.g., a TaqMan™ assay, is used, thereby allowing the comparison of the level of mRNA in a sample with a control sample or value. The known nucleic acid sequences for a desired cytokine are sufficient to enable one of skill to routinely select primers to amplify any portion of the gene. Suitable primers for amplification of specific sequences can be designed using principles well known in the art (see, e.g., Dieffenbach & Dveksler, PCR Primer: A Laboratory Manual (1995)).

In some embodiments, hybridization based assays can be used to detect the amount of a desired cytokine in the cells of a biological sample. Such assays include dot blot analysis of RNA as well as other assays, e.g., fluorescent in situ hybridization, which is performed on samples that comprise cells. Other hybridization assays are readily available in the art.

In numerous embodiments of the present invention, the level and/or presence of a cytokine polynucleotide or polypeptide will be detected in a biological sample, thereby detecting the differential expression of the cytokine to generate a cytokine profile from a biological sample derived from a patient infused with a CAR T cell of the invention compared to the control biological sample.

The amount of a cytokine polynucleotide or polypeptide detected in the biological sample indicates the presence of a cytokine to generate a cytokine profile for the purpose of classifying the patient for the appropriate cytokine treatment. For example, when the cytokine profile indicates an increase in a particular cytokine post T cell infusion compared to control (e.g., pre T cell infusion), a skilled artisan can

elect to administer to the patient in need of such management an effective amount of a cytokine inhibitory compound. Alternatively, , when the cytokine profile indicates a decrease in a particular cytokine post T cell infusion compared to control (e.g., pre T cell infusion), a skilled artisan can elect to administer to the patient in need of such  
5 management an effective amount of a cytokine activator compound.

In some embodiments, the difference in cytokine levels between the post T cell infusion sample and the control sample and be at least about 0.5, 1.0, 1.5, 2, 5, 10, 100, 200, 500, 1000 fold.

The present methods can also be used to assess the efficacy of a course  
10 of treatment. For example, in a post T cell infusion patient containing an elevated amount of a cytokine IL-6, the efficacy of an anti-IL-6 treatment can be assessed by monitoring, over time, IL-6. For example, a reduction in IL-6 polynucleotide or polypeptide levels in a biological sample taken from a patient following a treatment, compared to a level in a sample taken from the mammal before, or earlier in, the  
15 treatment, indicates efficacious treatment.

In one embodiment, a treatment regimen can be based on neutralizing the elevated cytokine. For example, antagonists of a cytokine can be selected for treatment. Antibodies are an example of a suitable antagonist and include mouse antibodies, chimeric antibodies, humanized antibodies, and human antibodies or  
20 fragments thereof. Chimeric antibodies are antibodies whose light and heavy chain genes have been constructed, typically by genetic engineering, from immunoglobulin gene segments belonging to different species (see, e.g., Boyce et al, Annals of Oncology 14:520-535 (2003)). For example, the variable (V) segments of the genes from a mouse monoclonal antibody may be joined to human constant (C) segments. A  
25 typical chimeric antibody is thus a hybrid protein consisting of the V or antigen-binding domain from a mouse antibody and the C or effector regions from a human antibody.

Humanized antibodies have variable region framework residues substantially from a human antibody (termed an acceptor antibody) and  
30 complementarity determining regions substantially from a mouse-antibody, (referred to as the donor immunoglobulin). See Queen et al, Proc. NatL. Acad. Sci. USA 86:10029-10033 (1989) and WO 90/07861, U.S. Pat. No. 5,693,762, U.S. Pat. No. 5,693,761, U.S. Pat. No. 5,585,089, U.S. Pat. No. 5,530,101 and Winter, U.S. Pat. No. 5,225,539. The constant region(s), if present, are also substantially or entirely from a

human immunoglobulin. Antibodies can be obtained by conventional hybridoma approaches, phage display (see, e.g., Dower et al, WO 91/17271 and McCafferty et al, WO 92/01047), use of transgenic mice with human immune systems (Lonberg et al, W093/12227 (1993)), among other sources. Nucleic acids encoding

5 immunoglobulin chains can be obtained from hybridomas or cell lines producing antibodies, or based on immunoglobulin nucleic acid or amino acid sequences in the published literature.

Other antagonists of a desired cytokine can also be used for treatment purposes. For example, a class of antagonists that can be used for the purposes of the

10 present invention, are the soluble forms of the receptors for the cytokine. By way of merely illustrative purposes, an IL-6 antagonist is an anti-IL-6 antibody that specifically binds to IL-6. A specific antibody has the ability to inhibit or antagonize the action of IL-6 systemically. In some embodiments, the antibody binds IL-6 and prevents it from interacting with or activating its receptors (e.g. IL-6Ra or IL-6Rp). In

15 some embodiments, the activity of IL-6 can be antagonized by using an antagonist to the interleukin-6 receptors (IL-6R). U.S. Application number 2006251653 describes methods for treating interleukin-6 related disease and discloses a number of interleukin-6 antagonists including, for example, humanized anti-IL-6R antibodies and chimeric anti-IL-6R antibodies. In some embodiments, an IL-6 or IL-6R

20 derivative can be used to block and antagonize the interaction between IL-6/IL-6R.

The invention is not limited to the cytokines and their corresponding activators and inhibitors described herein. Rather, the invention includes the used of any cytokine activator and/or inhibitor that is used in the art to modulate the cytokine. This is because the invention is based on managing cancer treatment in a patient

25 receiving infusion of CAR T cells of the invention wherein the infused CAR T cells result in increase and decrease levels of various cytokines. One skilled in the art based on the disclosure presented herein that differential expression levels of a cytokine in a post T cell infusion sample compared to a control sample can be targeted for treatment for have the cytokine level be increased or decreased to normal levels.

30

#### Therapeutic Application

The present invention encompasses a cell (e.g., T cell) transduced with a lentiviral vector (LV). For example, the LV encodes a CAR that combines an antigen recognition domain of a specific antibody with an intracellular domain of

CD3-zeta, CD28, 4-1BB, or any combinations thereof. Therefore, in some instances, the transduced T cell can elicit a CAR-mediated T-cell response.

The invention provides the use of a CAR to redirect the specificity of a primary T cell to a tumor antigen. Thus, the present invention also provides a method  
5 for stimulating a T cell-mediated immune response to a target cell population or tissue in a mammal comprising the step of administering to the mammal a T cell that expresses a CAR, wherein the CAR comprises a binding moiety that specifically interacts with a predetermined target, a zeta chain portion comprising for example the intracellular domain of human CD3zeta, and a costimulatory signaling region.

10 In one embodiment, the present invention includes a type of cellular therapy where T cells are genetically modified to express a CAR and the CAR T cell is infused to a recipient in need thereof. The infused cell is able to kill tumor cells in the recipient. Unlike antibody therapies, CAR T cells are able to replicate *in vivo* resulting in long-term persistence that can lead to sustained tumor control.

15 In one embodiment, the CAR T cells of the invention can undergo robust *in vivo* T cell expansion and can persist for an extended amount of time. In another embodiment, the CAR T cells of the invention evolve into specific memory T cells that can be reactivated to inhibit any additional tumor formation or growth. For example, it was unexpected that the CART19 cells of the invention can undergo  
20 robust *in vivo* T cell expansion and persist at high levels for an extended amount of time in blood and bone marrow and form specific memory T cells. Without wishing to be bound by any particular theory, CAR T cells may differentiate *in vivo* into a central memory-like state upon encounter and subsequent elimination of target cells expressing the surrogate antigen.

25 Without wishing to be bound by any particular theory, the anti-tumor immunity response elicited by the CAR-modified T cells may be an active or a passive immune response. In addition, the CAR mediated immune response may be part of an adoptive immunotherapy approach in which CAR-modified T cells induce an immune response specific to the antigen binding moiety in the CAR. For example,  
30 a CART19 cells elicits an immune response specific against cells expressing CD19.

While the data disclosed herein specifically disclose lentiviral vector comprising anti-CD 19 scFv derived from FMC63 murine monoclonal antibody, human CD8a hinge and transmembrane domain, and human 4-1BB and CD3zeta signaling domains, the invention should be construed to include any number of

variations for each of the components of the construct as described elsewhere herein. That is, the invention includes the use of any antigen binding moiety in the CAR to generate a CAR-mediated T-cell response specific to the antigen binding moiety. For example, the antigen binding moiety in the CAR of the invention can target a tumor  
5 antigen for the purposes of treat cancer.

Cancers that may be treated include tumors that are not vascularized, or not yet substantially vascularized, as well as vascularized tumors. The cancers may comprise non-solid tumors (such as hematological tumors, for example, leukemias and lymphomas) or may comprise solid tumors. Types of cancers to be treated with  
10 the CARs of the invention include, but are not limited to, carcinoma, blastoma, and sarcoma, and certain leukemia or lymphoid malignancies, benign and malignant tumors, and malignancies *e.g.*, sarcomas, carcinomas, and melanomas. Adult tumors/cancers and pediatric tumors/cancers are also included.

Hematologic cancers are cancers of the blood or bone marrow.  
15 Examples of hematological (or hematogenous) cancers include leukemias, including acute leukemias (such as acute lymphocytic leukemia, acute myelocytic leukemia, acute myelogenous leukemia and myeloblastic, promyelocytic, myelomonocytic, monocytic and erythroleukemia), chronic leukemias (such as chronic myelocytic (granulocytic) leukemia, chronic myelogenous leukemia, and chronic lymphocytic  
20 leukemia), polycythemia vera, lymphoma, Hodgkin's disease, non-Hodgkin's lymphoma (indolent and high grade forms), multiple myeloma, Waldenstrom's macroglobulinemia, heavy chain disease, myelodysplastic syndrome, hairy cell leukemia and myelodysplasia.

Solid tumors are abnormal masses of tissue that usually do not contain  
25 cysts or liquid areas. Solid tumors can be benign or malignant. Different types of solid tumors are named for the type of cells that form them (such as sarcomas, carcinomas, and lymphomas). Examples of solid tumors, such as sarcomas and carcinomas, include fibrosarcoma, myxosarcoma, liposarcoma, chondrosarcoma, osteosarcoma, and other sarcomas, synovioma, mesothelioma, Ewing's tumor, leiomyosarcoma,  
30 rhabdomyosarcoma, colon carcinoma, lymphoid malignancy, pancreatic cancer, breast cancer, lung cancers, ovarian cancer, prostate cancer, hepatocellular carcinoma, squamous cell carcinoma, basal cell carcinoma, adenocarcinoma, sweat gland carcinoma, medullary thyroid carcinoma, papillary thyroid carcinoma, pheochromocytomas sebaceous gland carcinoma, papillary carcinoma, papillary

adenocarcinomas, medullary carcinoma, bronchogenic carcinoma, renal cell carcinoma, hepatoma, bile duct carcinoma, choriocarcinoma, Wilms' tumor, cervical cancer, testicular tumor, seminoma, bladder carcinoma, melanoma, and CNS tumors (such as a glioma (such as brainstem glioma and mixed gliomas), glioblastoma (also  
5 known as glioblastoma multiforme) astrocytoma, CNS lymphoma, germinoma, medulloblastoma, Schwannoma craniopharyngioma, ependymoma, pinealoma, hemangioblastoma, acoustic neuroma, oligodendroglioma, meningioma, neuroblastoma, retinoblastoma and brain metastases).

In one embodiment, the antigen binding moiety portion of the CAR of the  
10 invention is designed to treat a particular cancer. For example, the CAR designed to target CD 19 can be used to treat cancers and disorders including but are not limited to pre-B ALL (pediatric indication), adult ALL, mantle cell lymphoma, diffuse large B-cell lymphoma, salvage post allogeneic bone marrow transplantation, and the like.

In another embodiment, the CAR can be designed to target CD22 to  
15 treat diffuse large B-cell lymphoma.

In one embodiment, cancers and disorders include but are not limited to pre-B ALL (pediatric indication), adult ALL, mantle cell lymphoma, diffuse large B-cell lymphoma, salvage post allogeneic bone marrow transplantation, and the like can be treated using a combination of CARs that target CD 19, CD20, CD22, and  
20 ROR1.

In one embodiment, the CAR can be designed to target mesothelin to treat mesothelioma, pancreatic cancer, ovarian cancer, and the like.

In one embodiment, the CAR can be designed to target CD33/IL3Ra to treat acute myelogenous leukemia and the like.

25 In one embodiment, the CAR can be designed to target c-Met to treat triple negative breast cancer, non-small cell lung cancer, and the like.

In one embodiment, the CAR can be designed to target PSMA to treat prostate cancer and the like.

In one embodiment, the CAR can be designed to target Glycolipid F77  
30 to treat prostate cancer and the like.

In one embodiment, the CAR can be designed to target EGFRvIII to treat glioblastoma and the like.

In one embodiment, the CAR can be designed to target GD-2 to treat neuroblastoma, melanoma, and the like.

In one embodiment, the CAR can be designed to target NY-ESO-1 TCR to treat myeloma, sarcoma, melanoma, and the like.

In one embodiment, the CAR can be designed to target MAGE A3 TCR to treat myeloma, sarcoma, melanoma, and the like.

5                   However, the invention should not be construed to be limited to solely to the antigen targets and diseases disclosed herein. Rather, the invention should be construed to include any antigenic target that is associated with a disease where a CAR can be used to treat the disease.

10                   The CAR-modified T cells of the invention may also serve as a type of vaccine for *ex vivo* immunization and/or *in vivo* therapy in a mammal. Preferably, the mammal is a human.

                    With respect to *ex vivo* immunization, at least one of the following occurs *in vitro* prior to administering the cell into a mammal: i) expansion of the cells, ii) introducing a nucleic acid encoding a CAR to the cells, and/or iii) cryopreservation  
15                   of the cells.

*Ex vivo* procedures are well known in the art and are discussed more fully below. Briefly, cells are isolated from a mammal (preferably a human) and genetically modified (i.e., transduced or transfected *in vitro*) with a vector expressing a CAR disclosed herein. The CAR-modified cell can be administered to a mammalian  
20                   recipient to provide a therapeutic benefit. The mammalian recipient may be a human and the CAR-modified cell can be autologous with respect to the recipient. Alternatively, the cells can be allogeneic, syngeneic or xenogeneic with respect to the recipient.

                    The procedure for *ex vivo* expansion of hematopoietic stem and progenitor cells is described in U.S. Pat. No. 5,199,942, incorporated herein by  
25                   reference, can be applied to the cells of the present invention. Other suitable methods are known in the art, therefore the present invention is not limited to any particular method of *ex vivo* expansion of the cells. Briefly, *ex vivo* culture and expansion of T cells comprises: (1) collecting CD34+ hematopoietic stem and progenitor cells from a  
30                   mammal from peripheral blood harvest or bone marrow explants; and (2) expanding such cells *ex vivo*. In addition to the cellular growth factors described in U.S. Pat. No. 5,199,942, other factors such as flt3-L, IL-1, IL-3 and c-kit ligand, can be used for culturing and expansion of the cells.

In addition to using a cell-based vaccine in terms of *ex vivo* immunization, the present invention also provides compositions and methods for *in vivo* immunization to elicit an immune response directed against an antigen in a patient.

5                    Generally, the cells activated and expanded as described herein may be utilized in the treatment and prevention of diseases that arise in individuals who are immunocompromised. In particular, the CAR-modified T cells of the invention are used in the treatment of CCL. In certain embodiments, the cells of the invention are used in the treatment of patients at risk for developing CCL. Thus, the present  
10                    invention provides methods for the treatment or prevention of CCL comprising administering to a subject in need thereof, a therapeutically effective amount of the CAR-modified T cells of the invention.

                    The CAR-modified T cells of the present invention may be administered either alone, or as a pharmaceutical composition in combination with  
15                    diluents and/or with other components such as IL-2 or other cytokines or cell populations. Briefly, pharmaceutical compositions of the present invention may comprise a target cell population as described herein, in combination with one or more pharmaceutically or physiologically acceptable carriers, diluents or excipients. Such compositions may comprise buffers such as neutral buffered saline, phosphate  
20                    buffered saline and the like; carbohydrates such as glucose, mannose, sucrose or dextrans, mannitol; proteins; polypeptides or amino acids such as glycine; antioxidants; chelating agents such as EDTA or glutathione; adjuvants (*e.g.*, aluminum hydroxide); and preservatives. Compositions of the present invention are preferably formulated for intravenous administration.

25                    Pharmaceutical compositions of the present invention may be administered in a manner appropriate to the disease to be treated (or prevented). The quantity and frequency of administration will be determined by such factors as the condition of the patient, and the type and severity of the patient's disease, although appropriate dosages may be determined by clinical trials.

30                    When "an immunologically effective amount", "an anti-tumor effective amount", "an tumor-inhibiting effective amount", or "therapeutic amount" is indicated, the precise amount of the compositions of the present invention to be administered can be determined by a physician with consideration of individual differences in age, weight, tumor size, extent of infection or metastasis, and condition

of the patient (subject). It can generally be stated that a pharmaceutical composition comprising the T cells described herein may be administered at a dosage of  $10^4$  to  $10^9$  cells/kg body weight, preferably  $10^5$  to  $10^6$  cells/kg body weight, including all integer values within those ranges. T cell compositions may also be administered multiple  
5 times at these dosages. The cells can be administered by using infusion techniques that are commonly known in immunotherapy (see, *e.g.*, Rosenberg et al, New Eng. J. of Med. 319:1676, 1988). The optimal dosage and treatment regime for a particular patient can readily be determined by one skilled in the art of medicine by monitoring the patient for signs of disease and adjusting the treatment accordingly.

10 In certain embodiments, it may be desired to administer activated T cells to a subject and then subsequently redraw blood (or have an apheresis performed), activate T cells therefrom according to the present invention, and reinfuse the patient with these activated and expanded T cells. This process can be carried out multiple times every few weeks. In certain embodiments, T cells can be activated  
15 from blood draws of from 10cc to 400cc. In certain embodiments, T cells are activated from blood draws of 20cc, 30cc, 40cc, 50cc, 60cc, 70cc, 80cc, 90cc, or 100cc. Not to be bound by theory, using this multiple blood draw/multiple reinfusion protocol may serve to select out certain populations of T cells.

The administration of the subject compositions may be carried out in  
20 any convenient manner, including by aerosol inhalation, injection, ingestion, transfusion, implantation or transplantation. The compositions described herein may be administered to a patient subcutaneously, intradermally, intratumorally, intranodally, intramedullary, intramuscularly, by intravenous (*i.v.*) injection, or intraperitoneally. In one embodiment, the T cell compositions of the present invention  
25 are administered to a patient by intradermal or subcutaneous injection. In another embodiment, the T cell compositions of the present invention are preferably administered by *i.v.* injection. The compositions of T cells may be injected directly into a tumor, lymph node, or site of infection.

In certain embodiments of the present invention, cells activated and  
30 expanded using the methods described herein, or other methods known in the art where T cells are expanded to therapeutic levels, are administered to a patient in conjunction with (*e.g.*, before, simultaneously or following) any number of relevant treatment modalities, including but not limited to treatment with agents such as antiviral therapy, cidofovir and interleukin-2, Cytarabine (also known as ARA-C) or

natalizumab treatment for MS patients or efalizumab treatment for psoriasis patients or other treatments for PML patients. In further embodiments, the T cells of the invention may be used in combination with chemotherapy, radiation, immunosuppressive agents, such as cyclosporin, azathioprine, methotrexate, mycophenolate, and FK506, antibodies, or other immunoablative agents such as CAMPATH, anti-CD3 antibodies or other antibody therapies, cytoxin, fludarabine, cyclosporin, FK506, rapamycin, mycophenolic acid, steroids, FR901228, cytokines, and irradiation. These drugs inhibit either the calcium dependent phosphatase calcineurin (cyclosporine and FK506) or inhibit the p70S6 kinase that is important for growth factor induced signaling (rapamycin) (Liu et al, Cell 66:807-815, 1991; Henderson et al, Immun. 73:316-321, 1991; Bierer et al, Curr. Opin. Immun. 5:763-773, 1993). In a further embodiment, the cell compositions of the present invention are administered to a patient in conjunction with (*e.g.*, before, simultaneously or following) bone marrow transplantation, T cell ablative therapy using either chemotherapy agents such as, fludarabine, external-beam radiation therapy (XRT), cyclophosphamide, or antibodies such as OKT3 or CAMPATH. In another embodiment, the cell compositions of the present invention are administered following B-cell ablative therapy such as agents that react with CD20, *e.g.*, Rituxan. For example, in one embodiment, subjects may undergo standard treatment with high dose chemotherapy followed by peripheral blood stem cell transplantation. In certain embodiments, following the transplant, subjects receive an infusion of the expanded immune cells of the present invention. In an additional embodiment, expanded cells are administered before or following surgery.

The dosage of the above treatments to be administered to a patient will vary with the precise nature of the condition being treated and the recipient of the treatment. The scaling of dosages for human administration can be performed according to art-accepted practices. The dose for CAMPATH, for example, will generally be in the range 1 to about 100 mg for an adult patient, usually administered daily for a period between 1 and 30 days. The preferred daily dose is 1 to 10 mg per day although in some instances larger doses of up to 40 mg per day may be used (described in U.S. Patent No. 6,120,766).

#### Treatment of Cytokine Release Syndrome (CRS)

The invention is based partly on the discovery that in vivo proliferation of CART 19 cells and the potent anti-tumor activity associated therewith is also associated with with CRS, leading to hemophagocytic lymphohistiocytosis (HLH), also termed Macrophage Activation Syndrome (MAS). Without wishing to be bound  
5 by any particular theory, it is believed that that MAS/HLH is a unique biomarker that is associated with and may be required for CART 19 potent anti-tumor activity.

Accordingly, the invention provides a first-line of therapy comprising administering the CAR of the invention into the patient and a second-line of therapy comprising administering a type of therapy to manage the elevated levels of certain  
10 soluble factors resulting from the first-line of therapy of using CAR T cells.

In one embodiment, the second-line of therapy comprises compositions and methods for the treatment of CRS. Symptoms of CRS include high fevers, nausea, transient hypotension, hypoxia, and the like. The present invention is based on the observation that CART 19 cells induced elevated levels of soluble factors in the  
15 patient including but is not limited to IFN- $\gamma$ , TNFa, IL-2 and IL-6. Therefore, the second-line of therapy comprises compounds and methods for neutralizing the effects against the elevated cytokines resulting from the administration of the CART 19 cells. In one embodiment, the neutralizing agents are capable of counteracting undesired concerted burst of cytokine expression/activity and, thus, are useful for the  
20 prevention, amelioration and treatment of CRS associated with CART 19 therapy.

In one embodiment, the treatment of CRS is performed around day 10-12 post-infusion of CART19 cells.

In one embodiment, the second-line of therapy comprises administering a steroid to the patient. In another embodiment, the second-line of  
25 therapy comprises administering one of more of a steroid, an inhibitor of TNFa, and an inhibitor of IL-6. An example of a TNFa inhibitor is entanercept. An example of an IL-6 inhibitor is Tocilizumab (toe).

#### EXPERIMENTAL EXAMPLES

30 The invention is further described in detail by reference to the following experimental examples. These examples are provided for purposes of illustration only, and are not intended to be limiting unless otherwise specified. Thus, the invention should in no way be construed as being limited to the following

examples, but rather, should be construed to encompass any and all variations which become evident as a result of the teaching provided herein.

Without further description, it is believed that one of ordinary skill in the art can, using the preceding description and the following illustrative examples, make and utilize the compounds of the present invention and practice the claimed methods. The following working examples therefore, specifically point out the preferred embodiments of the present invention, and are not to be construed as limiting in any way the remainder of the disclosure.

10 Example 1: Cytokine therapy in combination with CAR T cell infusion

The results presented herein demonstrate that patients following infusion of CAR T cells exhibit differential expression levels of various cytokines. In some instances, the elevated levels of some cytokines are a result of the toxicity of the infused CAR T cells (Figure 1). It was observed that tocilizumab (anti-IL6) can ameliorate the toxicity of CARs and seemingly preserve antitumor effects in 2 of 2 patients (Figure 2). Without wishing to be bound by any particular theory, it is believed that anakinra and other reagents that block IL-1 may also be useful in this regard. The data presented herein also demonstrates that IL-1 is elevated in patients, and this may lead to the later rise in IL-6. Anakinra is an IL-1Ra recombinant protein which binds to the IL1 receptors and blocks both IL-1 alpha and beta signaling. Anakinra has a short 1/2 life. There is an advantage to use Anakinra to start treating patients since both IL-1 alpha and beta would be blocked, and also relieve the cytokine storm and keep the anti-tumor effect.

It was also observed that antibody interventions did not impart CART19 cellular functionality as measured by Perforin and IFN- $\gamma$  (Figure 3).

30 Example 2: CD19-Redirected Chimeric Antigen Receptor T (CART19) Cells Induce a Cytokine Release Syndrome (CRS) and Induction of Treatable Macrophage Activation Syndrome (MAS) That Can Be Managed by the IL-6 Antagonist Tocilizumab (toe)

Infusion of CART19 cells results in 100 to 100,000x in vivo proliferation, tumor lysis syndrome followed by durable antitumor activity, and prolonged persistence in patients with B cell tumors. The results presented herein

demonstrate that in vivo proliferation of CART 19 cells and potent anti-tumor activity therefrom is associated with CRS, leading to hemophagocytic lymphohistiocytosis (HLH), also termed MAS. Without wishing to be bound by any particular theory, it is believed that MAS/HLH is a unique biomarker that is associated with and may be required for potent anti-tumor activity.

Autologous T cells were lentivirally transduced with a CAR composed of anti-CD19 scFv/4-1BB/CD3-zeta, activated/expanded ex-vivo with anti-CD3/anti-CD28 beads, and then infused into ALL or CLL patients with persistent disease after 2-8 prior treatments. CART19 anti ALL activity was also modeled in a xenograft mouse model with high level of human ALL/human T cell engraftment and simultaneous detection of CAR T cells and ALL using 2-color bioluminescent imaging.

The results presented herein provides updated results of 10 patients who received CART 19 cells, including 9 patients with CLL and 1 pediatric patient with relapsed refractory ALL. 6/9 evaluable patients had a complete recovery (CR) or partial recovery (PR), including 4 sustained CRs. While there was no acute infusion toxicity, all responding patients also developed CRS. All had high fevers, as well as grade 3 or 4 hypotension/hypoxia. CRS preceded peak blood expression of CART 19 cells, and then increased in intensity until the CART 19 cell peak (D 10-31 after infusion). The ALL patient experienced the most significant toxicity, with grade 4 hypotension and respiratory failure. Steroid therapy on D6 resulted in no improvement. On D9, noting high levels of TNF $\alpha$  and IL-6 (peak increases above baseline: IFN $\gamma$  at 6040x; IL-6 at 988x; IL-2R at 56x, IL-2 at 163x and TNF $\alpha$  at 17x), TNF $\alpha$  and IL-6 antagonists (etanercept and toc) were administered. This resulted in resolution of fever and hypotension within 12hr and a rapid wean from ventilator support to room air. These interventions had no apparent impact on CART 19 cell expansion or efficacy: peak of CAR T cells (2539 CAR+ cells/uL; 77% of CD3 cells by flow) occurred on D 11, and D23 bone marrow showed CR with negative minimal residual disease (MRD), compared to her initial on-study marrow which showed 65% blasts. Although she had no history of CNS ALL, spinal fluid showed detectable CART 19 cells (21 lymphs/mL; 78% CAR+). At 4mo post infusion, this patient remained in CR, with 17 CART 19 cells/uL in the blood and 31% CAR+ CD3 cells in the marrow.

Clinical assessment of subsequent responding patients shows all had evidence of MAS/HLH including dramatic elevations of ferritin and histologic evidence of HLH. Peak ferritin levels range from 44,000 to 605,000, preceding and continuing with peak T cell proliferation. Other consistent findings include rapid onset hepatosplenomegaly unrelated to disease and moderate DIC.

Subsequently, 3 CLL patients have also been treated with toe, also with prompt and striking resolution of high fevers, hypotension and hypoxia. One patient received toe on D10 and achieved a CR accompanied by CART 19 expansion. Another patient had rapid resolution of CRS following toe administration on day 9 and follow up for response is too short. A 3rd CLL patient received toe on D3 for early fevers and had no CART- 19 proliferation and no response.

To model the timing of cytokine blockade, xenografts using bioluminescent primary pediatric ALL were established and then treated with extra cells from the clinical manufacture. The CART 19 cells proliferated and resulted in prolonged survival. Cytokine blockade prior to T cell infusion with toe and/or etanercept abrogated disease control with less in vivo proliferation of infused CART 19 cells, confirming the result seen in the one patient given early toe (D3).

CART 19 T cells can produce massive in-vivo expansion, long-term persistence, and anti-tumor efficacy, but can also induce significant CRS with features suggestive of MAS/HLH that responds rapidly to cytokine blockade. Given prior to initiation of significant CART 19 proliferation, blockade of TNFa and/or IL-6 may interfere with proliferation and effector function, but if given at a point where cell proliferation is underway, toe may ameliorate the symptoms that have been observed that correlate with robust clinical responses.

25

#### Example 3 Remission of ALL by Chimeric Antigen Receptor-Expressing T Cells:

The results presented herein demonstrate that CAR T cells have clinical activity in acute lymphocytic leukemia (ALL). Briefly, two pediatric patients with relapsed and refractory pre-B cell ALL were treated with  $10^6$  to  $10^7$ /kg T cell transduced with anti-CD 19 antibody and a T-cell signaling molecule (CTL019 CAR T cells; also referred to as CART19). The CTL019 T cells expanded more than 1000-fold in both patients, and trafficked to bone marrow. In addition, the CAR T cells were able to cross the blood brain barrier and persisted at high levels for at least 6 months, as measured in the cerebral spinal fluid. Eight severe adverse events were

30

noted. Both patients developed a cytokine release syndrome (CRS) and B cell aplasia. In one child, the CRS was severe and cytokine blockade with etanercept and tocilizumab was effective in reversing the syndrome, and yet did not prevent CAR T cell expansion and anti-leukemic efficacy. Complete remission was observed in both patients, and is ongoing in one patient at 9 months after treatment. The other patient relapsed with blast cells that no longer express CD 19 approximately 2 months after treatment.

The results presented herein demonstrate that CAR modified T cells are capable of killing even aggressive treatment refractory acute leukemia cells in vivo. The emergence of tumor cells that no longer express the target indicates a need to target other molecules in addition to CD 19 in some patients with ALL.

The in vivo expansion and robust anti-leukemic effects of CTL019 (CART 19) cells in 3 patients with CLL as been reported (Porter et al, 2011, N Engl J Med 365:725-33; Kalos et al, 2011, Science Translational Medicine 3:95ra73). CTL019 is a CAR that includes a CD 137 (4-1BB) signaling domain and is expressed using lentiviral vector technology (Milone et al, 2009, Mol Ther 17:1453-64). The results presented herein demonstrate the use of CTL019 in 2 pediatric patients with refractory and relapsed ALL. Both patients had remission of leukemia, accompanied by robust expansion of CTL019 in vivo with trafficking to marrow and the CNS. The anti-leukemic effects were potent since one patient had chemotherapy refractory disease precluding allogeneic donor stem cell transplantation and the other patient relapsed after allogeneic cord blood transplantation and was resistant to blinatumomab (chimeric bispecific anti-CD3 and anti-CD 19) therapy.

The materials and methods employed in these experiments are now described.

#### Materials and Methods

##### CART 19

CTL019 (CART 19) production has been previously reported (Porter et al, 2011, N Engl J Med 365:725-33; Kalos et al, 2011, Science Translational Medicine 3:95ra73). CTL019 was detected and quantified in patient specimens as previously reported (Porter et al., 2011, N Engl J Med 365:725-33; Kalos et al, 2011, Science Translational Medicine 3:95ra73).

### Sample draws and processing

Samples (peripheral blood, bone marrow) were collected in lavender top (K2EDTA,) or red top (no additive) vacutainer tubes (Becton Dickinson).

- 5 Lavender top tubes were delivered to the laboratory within 2 hours of draw, or shipped overnight at room temperature in insulated containers essentially as described (Olson et al, 2011, J Transl Med 9:26) prior to processing. Samples were processed within 30 minutes of receipt according to established laboratory SOP. Peripheral blood and marrow mononuclear cells were purified, processed, and stored in liquid
- 10 nitrogen as described (Kalos et al, 2011, Science Translational Medicine 3:95ra73). Red top tubes were processed within 2 hours of draw including coagulation time; serum isolated by centrifugation, aliquoted in single use 100  $\mu$ L aliquots and stored at -80° C. CSF was delivered to the laboratory within 30 minutes of aspiration and cells in CSF were collected by centrifugation of CSF fluid and processed for DNA and
- 15 flow cytometry.

### Q-PCR analysis

- Whole-blood or marrow samples were collected in lavender top (K2EDTA) BD vacutainer tubes (Becton Dickinson). Genomic DNA was isolated
- 20 directly from whole-blood and Q-PCR analysis on genomic DNA samples was performed in bulk using ABI Taqman technology and a validated assay to detect the integrated CD19 CARtransgene sequence as described (Kalos et al, 2011, Science Translational Medicine 3:95ra73) using 200 ng genomic DNA per time-point for peripheral blood and marrow samples, and 18-21.7 ng genomic DNA per time-point
- 25 for CSF samples. To determine copy number per unit DNA, an 8-point standard curve was generated consisting of 5 to 10<sup>6</sup> copies CTL019 lentivirus plasmid spiked into 100 ng non-transduced control genomic DNA. Each data-point (sample, standard curve) was evaluated in triplicate with a positive Ct value in 3/3 replicates with % CV less than 0.95% for all quantifiable values. A parallel amplification reaction to control
- 30 for the quality of interrogated DNA was performed using 20 ng input genomic DNA from peripheral blood and marrow (2-4.3 ng for CSF samples), and a primer/probe combination specific for non-transcribed genomic sequence upstream of the CDKN1A gene as described (Kalos et al, 2011, Science Translational Medicine 3:95ra73). These amplification reactions generated a correction factor (CF) to correct

for calculated versus actual DNA input. Copies of transgene per microgram DNA were calculated according to the formula: copies calculated from CTLO 19 standard curve per input DNA (ng) x CF x 1000 ng. Accuracy of this assay was determined by the ability to quantify marking of the infused cell product by Q-PCR. These blinded  
 5 determinations generated Q-PCR and flow marking values of 11.1% and 11.6%, respectively, for the CHOP-100 and 20.0% and 14.4%, respectively, marking for the CHOP-101 infusion products.

#### Soluble factor analysis

10 Whole blood was collected in red top (no additive) BD vacutainer tubes (Becton Dickinson), processed to obtain serum using established laboratory SOP, aliquoted for single use and stored at -80°C. Quantification of soluble cytokine factors was performed using Luminex bead array technology and kits purchased from Life technologies (Invitrogen). Assays were performed as per the manufacturer  
 15 protocol with a 9 point standard curve generated using a 3-fold dilution series. The 2 external standard points were evaluated in duplicate and the 5 internal standards in singlicate; all samples were evaluated in duplicate at 1:2 dilution; calculated % CV for the duplicate measures were less than 15%. Data were acquired on a FlexMAP-3D by percent and analyzed using Xponent 4.0 software and 5-parameter logistic  
 20 regression analysis. Standard curve quantification ranges were determined by the 80-120% (observed/expected value) range. Reported values included those within the standard curve range and those calculated by the logistic regression analysis.

#### Antibody reagents

25 The following antibodies were used for these studies: MDA-CAR (Jena and Cooper, 2013, L. Anti-idiotypic antibody for CD19. PlosONE 2013; in press), a murine antibody to CD 19 CAR conjugated to Alexa647. Antibodies for multi-parametric immunophenotyping: T cell detection panels: anti-CD3-FITC, anti-CD8-PE, anti-CD 14-PE-Cy7, anti-CD 16-PE-Cy7, anti-CD 19-PE-Cy7 anti-CD 16-PE-  
 30 Cy7. B cell detection panels: anti- CD20-FITC, anti-CD45-PE, anti-CD45-APC, anti-CD19-PE-Cy7, anti-CD19-PE, anti-CD34-PCP-e710 and anti CD34-APC were procured from e-Biosciences.

#### Multi-parameter flow cytometry

Cells were evaluated by flow cytometry directly after Ficoll-Paque processing, with the exception of the CHOP- 101 baseline sample which was evaluated immediately after thaw of a cryopreserved sample. Multi-parametric immunophenotyping for peripheral blood and marrow samples was performed using approximately 0.2-0.5 x10<sup>6</sup> total cells per condition (depending on cell yield in samples), and for CSF samples using trace amounts of cells collected following centrifugation of CSF fluid, and using fluorescence minus one (FMO) stains as described in the text. Cells were stained in 100 µL PBS for 30 minutes on ice using antibody and reagent concentrations recommended by the manufacturer, washed, and resuspended in 0.5% paraformaldehyde and acquired using an Accuri C6 cytometer equipped with a Blue (488) and Red (633 nm) laser. Accuri files were exported in FCS file format and analyzed using FlowJo software (Version 9.5.3, Treestar). Compensation values were established using single antibody stains and BD compensation beads (Becton Dickinson) and were calculated by the software. The gating strategy for T cells was as follows: Live cells (FSC/SSC) > dump channel (CD14+CD16+CD19-PECy7) vs CD3+ > CD3+. The general gating strategy for B cells was as follows: Live cells (FSC/SSC) > SSC low events > CD 19+. More gating details for the CHOP- 100 and CHOP- 101 samples are described in the individual Figures.

#### Molecular MRP analysis

Molecular MRD analysis was performed by Adaptive Biotechnologies (Seattle, WA) and high-throughput next-generation sequencing of the BCR IGH CDR3 region using the Illumina HiSeq/MiSeq platform-based immunoSEQ assay (Larimore et al, 2012, J Immunol 189:3221-30). For these analyses, 701-6,000 ng (approximately 111,000- 950,000 genome equivalents) of genomic DNA isolated from whole blood or marrow samples obtained from patients were subjected to combined multiplex PCR and sequencing followed by algorithmic analyses to quantify individual IGH CDR3 sequences in samples. Parallel amplifications and sequencing of the TCRB CDR3 region (Robins et al, 2009, Blood 114:4099-107) in each sample were done to assess quality of DNA samples. For each patient, the IGH CDR3 nucleotide sequences assayed from samples of different time points were aligned using EMBL-EBI multiple sequence alignment tool (Goujon et al, 2010, Nucleic Acids Res 38:W695-9; Sievers et al, 2011, Mol Syst Biol 7:539). The

dominant clone from the earliest time-point sample was bioinformatically tracked across the assayed IGH CDR3 sequences in the following time-point samples to identify presence of sequences with 95% or greater pair-wise sequence identity. The total sequencing reads for those sequences similar to the dominant clone are reported  
 5 for each time-point.

The results of the experiments are now described.

#### Case reports

10 CHOP- 100 was a 7yo girl in her second recurrence of ALL. She was diagnosed 2 years prior and achieved a minimal residual disease (MRD) negative remission, relapsing 17 months after diagnosis. She re-entered remission after reinduction chemotherapy but recurred 4 months later, after which she did not respond to further clofarabine/etoposide/cyclophosphamide. Her karyotype at baseline  
 15 was 48,XX,del(9)(p21.3),+1 I,del(14)(q2? q24),+16/46,XX[4]. Peripheral blood mononuclear cells (PBMC) were collected by apheresis before the intensive chemotherapy, anticipating that there may be insufficient circulating T cells available for cell manufacturing after such intensive treatment. This patient was infused with CTL019 cells that had been anti-CD3/CD28 expanded and lentivirally transduced to  
 20 express the anti-CD19 CAR in a total dose of  $3.8 \times 10^8$  cells/kg ( $1.2 \times 10^7$  CTL019 cells/kg) given over 3 consecutive days as previously described (Porter et al, 2011, N Engl J Med 365:725-33; Kalos et al, 2011, Science Translational Medicine 3:95ra73). She did not receive lymphodepleting chemotherapy before her CTL019 infusions, with the most recent cytotoxic therapy given 6 weeks before CTL019 infusion. No  
 25 immediate infusional toxicities were noted, but she was hospitalized for low-grade fevers which progressed to high fevers by day 4, and on day 5 the patient was transferred to the pediatric ICU (CHOP- 100, Figure 4A). This was followed by rapid progression to significant respiratory and cardiovascular compromise requiring mechanical ventilation and blood pressure support.

30 The second ALL patient was a 10yo girl (CHOP- 101) who had experienced her second relapse after a 4/6 matched unrelated umbilical cord transplant 28 months after diagnosis and 10 months before CTL019 infusion. She had experienced graft vs. host disease (GVHD) after her transplant, which resolved with treatment; she was off immunosuppression at the time of her relapse. She did not

subsequently re-enter remission in spite of multiple cytotoxic and biologic therapies. Her baseline karyotype was 46 XX, del(1)(p13), t(2;9)(q?21;q?21), t(3;17)(p24;q23), del(6)(q16q21), del(9)(q13q22), der(16)t(1;?;16)(p13;?p13.3)[9],//46, Xy[1]. Before PBMC collection, she was treated with two cycles of blinatumomab (Bargou et al, 2008, Science 321 :974-7) with no response. Her peripheral blood cells were 68% donor origin at the time of PBMC collection. CTL019 T cells were manufactured and infused as a total dose of  $10^7$  cells/kg ( $1.4 \times 10^6$  CTL019 cells/kg) in a single dose, after etoposide/cyclophosphamide chemotherapy given for lymphodepletion the week before. Her bone marrow on the day before CTL019 infusion was replaced by a population of CD19+/CD34+ ALL cells, with variable expression of CD19 by standard clinical flow cytometry (Figure 7). She had no immediate infusional toxicities, but developed a fever on D+6 and was admitted to the hospital. She experienced no cardiopulmonary toxicities, and did not receive glucocorticoids or anti-cytokine therapy. CHOP-101 experienced fever of unknown origin, suspected to be due to cytokine release (Figure 4B), myalgias and two days of confusion (grade 3), which spontaneously resolved. She had no evidence of GVHD after the infusion of the CTL019 cells. Though these cells had been collected from the patient, they were largely of donor (cord blood) origin.

## 20 Induction of remission in both subjects

Both subjects had an increase in circulating lymphocytes and neutrophils in the 2 weeks following CTL019 infusion, as shown by plots depicting total WBC, ALC, and ANC relative to timing of CTL019 infusion (Figure 4C). Most of the lymphocytes were comprised of T cells that expressed the chimeric antigen receptor (Figure 8), shown in more detail in Figure 5. In both subjects, high-grade non-infectious fevers were documented, followed by elevations of LDH (Figure 4A). The elevations of LDH and high grade fevers were similar to those previously described in CLL patients after CTL019 infusion (.Porter et al, 2011, N Engl J Med 365:725-33; Kalos et al, 2011, Science Translational Medicine 3:95ra73).

Approximately one month after infusion, MRD negative (<0.01%) morphologic remission of leukemia was achieved in both subjects (Table 1).

The clinical remission in CHOP-100 was associated with a deep molecular remission that has persisted for at least 9 months as of January 2013 (Table 1). High-throughput DNA sequencing of the IGH locus revealed a pronounced

decrease in total IGH reads at D+23 in the blood and marrow of CHOP- 100. The malignant clone was not detected in the blood or marrow in more than 1 million cell equivalents that were sequenced at D+180. In contrast, T-cell receptor sequences were readily detected in blood and marrow, indicating the integrity of the DNA tested at all 5 timepoints.

Table 1: Induction of molecular remission in blood and bone marrow of CHOP- 100 and 101

Patient	Tissue	Timepoint (day)	Number of input genomes (cell equivalents)	Total TCR $\beta$ reads	Total IGH reads	Total IGH unique reads	Dominant clone reads	Tumor clone frequency (%)
CHP959-100	Blood	-1	111,340	525,717	188	6	185	97.88
		23	218,210	1,651,129	0	0	0	0.00
		87	288,152	1,416,376	0	0	0	0.00
		180	420,571	1,276,098	6	2	0	0.00
	Marrow	-1	317,460	348,687	59,791	318	59,774	99.97
		23	362,819	1,712,507	37	2	33	89.19
		87	645,553	425,128	10	1	10	100.00
		180	952,561	800,870	45	7	0	0.00
CHP959-101	Blood	-1	152,584	1,873,116	38,170	52	30,425	79.71
		23	417,371	1,462,911	92	5	18	19.60
	Marrow	-1	158,730	1,417,992	68,368	65	50,887	74.43
		23	305,067	1,978,600	1,414	11	946	66.90
		60	216,571	N/A	530,833	206	363,736	68.90

10 *Molecular analysis of minimal residual disease was performed on DNA isolated from whole blood or marrow*

#### Toxicity of CTL019

Grade 3 and 4 adverse events are summarized in Table 2. Acute toxicity was observed in both patients that consisted of fever, and a cytokine release syndrome (CRS) that evolved into a macrophage activation syndrome (MAS). Both patients were monitored and given prophylaxis for tumor lysis syndrome. Both experienced substantial elevations of LDH, the causes of which were likely multifactorial but could have included tumor lysis syndrome. Each uric acid value in CHOP- 100 was either below normal or in the normal range, and she received allopurinol only on days 5-6. CHOP- 101 received prophylactic allopurinol on days 0-14 and had abnormal uric acid values of 4.8-5.7 on days 8-10, consistent with mild tumor lysis syndrome.

25 Table 2: Adverse events (grade 3 and 4) in CHOP-100 and CHOP-101

CHP53-100				
AE Category	AE Toxicity	AE Grade	AE Description	Durations
INFECTION	Febrie neutropenia	3	Febrie neutropenia. Temperature: Peak temperature 40.7°C, resolved day 7 after administration of tocilizumab.	7 days
CARDIAC GENERAL	Hypotension	4	Shock requiring pressor support. Off all pressor support on day 7 other than weaning dobutamine.	4 days at grade 4, off all pressors by day 12
VASCULAR	Acute vascular leak syndrome	4	Life-threatening; pressor support or ventilatory support indicated	see above
PULMONARY/RESPIRATORY	Adult Respiratory Distress Syndrome (ARDS)	4	Present, intubation indicated. Chest X-ray cleared on day 8.	12 days

CHP53-101				
AE Category	AE Toxicity	AE Grade	AE Description	Durations
INFECTION	Febrie neutropenia	3	Febrie neutropenia. Peak temperature 40.3°C, resolved day 6.	6 days
NEUROLOGY	Encephalopathy	3	Parents reported confusion. MRI was normal.	3 days
METABOLIC/ LABORATORY	elevated AST	4	Peak AST Value: 3050 (Grade 4)	1 day at grade 4
METABOLIC/ LABORATORY	elevated ALT	4	Peak ALT Value: 745 (Grade 4)	1 day at grade 4

*Adverse events were graded according to Common Terminology Criteria for Adverse Events 3.0*

- 5 In CHOP- 100, glucocorticoids were administered on D+5 with a brief response in the fever curve but without remission of hypotension. A single course of anti-cytokine therapy consisting of etanercept and tocilizumab was given on D+8 and was followed by rapid clinical effects: within hours she defervesced, was weaned off vasoactive medications and ventilatory support as her clinical and radiologic ARDS
- 10 resolved. She did not have laboratory evidence of a tumor lysis syndrome; however, biochemical evidence of MAS was noted with elevation of ferritin to 45,529ng/dl on D+11, coagulopathy with elevated d-dimer and hypofibrinogenemia, hepatosplenomegaly, elevation of transaminases, elevated LDH (Figure 4C), and elevated triglycerides, as well as a cytokine profile consistent with MAS. Her ferritin
- 15 decreased to 2,368 by D+26 and the clinical and laboratory abnormalities of MAS resolved.

- In CHOP- 101, although there was no direct evidence of a tumor lysis syndrome other than fever and changes in LDH (Figure 4C), she also developed features of MAS with elevations in ferritin to 33,360 on D+7, peaking at 74,899 on
- 20 day 11, transaminases that reached grade 4 for 1 day, and an elevated d-dimer in serum. These biochemical changes were reversible, as transaminases improved to grade 1 and the ferritin decreased to 3,894 by D+21. She was discharged from the hospital on day D+16.

Both subjects developed prominent elevations in a number of cytokines and cytokine receptors in the serum (Figure 1B). In both patients, elevations in interferon- $\gamma$  and IL-6 were most prominent. These observations are similar to the pattern observed previously in patients with CLL who also experienced remission of leukemia after CTL019 infusion (Kalos et al, 2011, Science Translational Medicine 3:95ra73). The peak cytokine elevations were temporally correlated with systemic inflammation as judged by changes in core body temperature (Figure 4C).

#### In vivo expansion of CTL019 in patients with ALL

The fraction of CTL019 T cells in circulation progressively increased in vivo to 72% (CHOP-100) and 34% (CHOP-101) of T cells (Figure 5A). The initial transduction efficiency was 11.6% and 14.4% in the T cells infused in CHOP-100 and -101, respectively. Given that the total ALC increased substantially in both patients (Figure 4C), and that the frequency of CTL019 cells progressively increased in vivo from the baseline frequency (Figure 8), there was a robust and selective expansion of CTL019 cells in both patients. The selective increase in T cells expressing CTL019 in both patients is consistent with an anti-leukemic mechanism involving CD19-driven expansion, and with the subsequent elimination of cells that express CD 19 in both patients (Figure 6 and Figure 9).

Molecular deep sequence analysis of TCRs in the peripheral blood and marrow samples in CHOP-100 obtained at D+23, when >65% of CD3+ cells in peripheral blood and marrow were shown to be CTL019+ by flow cytometry, revealed the absence of a dominant T cell TCR clonotype in either compartment, with the 10 most abundant T cells present at frequencies between 0.18 - 0.7% in bone marrow and 0.19 to 0.8% in peripheral blood. Six of the 10 dominant clones were shared between the two compartments. In addition both CD4 and CD8 CAR T cells are present. Thus, the CAR T cells appear to proliferate after CD 19-stimulated expansion, and not by TCR signals or clone-specific events such as activation by integration of the lentivirus.

#### Trafficking and morphology of CTL019 CAR T cells in marrow and CNS

CTL019 cells expanded more than 1000-fold in the peripheral blood and bone marrow (Figure 5). The frequency of CTL019 cells increased to more than 10% of circulating T cells by D+20 in both subjects (Figure 8), with the absolute

magnitude of CTL019 expansion similar to that observed in patients with CLL (Kalos et al, 2011, Science Translational Medicine 3:95ra73). Unexpectedly, cells in the CSF also showed a high degree of CTL019 gene marking and also persisted at high frequency out to 6 months (Figure 5B). The trafficking of CTL019 cells to the CSF was surprising given that neither patient had detectable CNS leukemia by cytopsin at the time of infusion or at the 1 month post-treatment evaluation. Furthermore, prior reports of CAR therapy for B cell malignancies have not observed trafficking of CAR T cells to the CNS (Till et al, 2008, Blood 112:2261-71; Brentjens et al, 2011, Blood 118:4817-28; Savoldo et al, 2011, J Clin Invest 121:1822-5; Jensen et al, 2010, Biol Blood Marrow Transplant 16:1245-56; Till et al, 2012, Blood 119:3940-50; Kochenderfer et al, 2012, Blood 119:2709-20). The morphology of the lymphocytes in blood and CSF is shown for CHOP-100 and 101 in Figure 5D. Since >70% of lymphocytes in circulation on D+10 were CTL019 cells (Figures 5A and 5B), most of the large granular lymphocytes shown in the left panel of Figure 5D are likely CTL019 cells. Similarly, since many lymphocytes in the CSF obtained from CHOP-101 on D+23 were CTL019 cells (Figures 5B and 5C), the cytopsin of CSF lymphocytes in Figure 5D most likely represents the morphology of CTL019 cells in vivo that have trafficked to the CNS.

#### 20 Induction of B cell aplasia

Both subjects had an elimination of CD19 positive cells in bone marrow and blood within 1 month after CTL019 infusion (Figure 6, and Figure 9). In CHOP-100, a large proportion of cells remaining in the marrow at D+6 after infusion were CD19+CD20+ leukemic blast cells. This population of cells was not detectable by D+23, an effect that is maintained beyond 9 months in this patient (Figure 9A). Given that CHOP-100 did not have chemotherapy in the 6 weeks preceding CTL019 infusion, this indicates that CTL019 cells were sufficient to ablate normal and leukemic B cells in this case.

#### 30 Emergence of CD19 escape variant in CHOP-101

CHOP-101 experienced a clinical relapse apparent in the peripheral blood at 2 months after CTL019 infusion, as evidenced by the reappearance of blast cells in the circulation. These cells were CD45dim positive, CD34 positive and did not express CD19 (Figure 6). The absence of the original dominant

CD34dim+CD34+CD19dim+ cells is consistent with a potent anti-leukemic selective pressure of the CTL019 CAR T cells directed to CD 19 (Figure 9B). Deep IGH sequencing revealed the presence of the malignant clone in peripheral blood and marrow as early as D+23 (Table 1), despite a clinical assessment of MRD negativity  
 5 by flow cytometry at this timepoint (Figure 7). In addition, deep sequencing of material obtained at clinical relapse revealed that the CD45dimCD34+CD19- cells are clonally related to the initial dominant CD45dim+CD34+CD19dim+ cells, since they share the same IGH sequence.

#### 10 Remission of ALL by Chimeric Antigen Receptor-Expressing T Cells

The results presented herein demonstrate the induction of remission of relapsed and refractory leukemia in the first two patients treated on this protocol. Remission has been sustained in one subject and was accompanied by relapse due to the emergence of CD 19 negative blasts in the other subject. Genetically modified  
 15 CTL019 cells trafficked to the CNS at high levels in both patients. Cytokine elevations were observed that were on target, reversible, and temporally accompanied by elimination of blast cells that expressed CD19 in both subjects. The induction of complete remission in refractory CD 19 positive ALL following infusion of CAR T cells is encouraging, particularly given the low frequency of remissions following the  
 20 infusion of allogeneic donor lymphocyte infusions that do not express CARs (Kolb et al, 1995, Blood 86:2041-50; Collins et al, 1997, J Clin Oncol 15:433-44; Collins et al, 2000, Bone Marrow Transplant 26(5):511-6). Deep sequencing technology indicated that the CTL019 CAR infusion was associated with a sustained 5-log reduction in the frequency of malignant B cells in CHOP- 100, further indicating  
 25 potent antitumor effects in chemotherapy-refractory leukemia.

The unfortunate emergence of CD 19-negative blast cells in one subject is consistent with previous reports that document the existence of CD 19-negative precursor cells in some cases of ALL (Hotfilder et al, 2005, Cancer Research 65:1442-9; le Viseur et al, 2008, Cancer Cell 14:47-58). It is possible that the  
 30 coinfusion of CAR T cells redirected to novel specificities in addition to CD 19 might decrease the likelihood of this event. Thus far, relapse with CD 19-negative escape cells in adults with CLL after treatment with CTL019 cells have not been observed (Kalos et al, 2011, Science Translational Medicine 3:95ra73), suggesting that this issue may be specific for a subset of acute leukemias. The induction of remission in

CHOP-100 did not require concomitant chemotherapy, and is consistent with a previous report showing that remissions in CLL could be delayed for several weeks following chemotherapy (Porter et al, 2011, N Engl J Med 365:725-33). Thus, concomitant administration of cytotoxic chemotherapy may not be necessary for  
5 CAR-mediated antitumor effects.

Both pediatric ALL patients experienced substantial toxicity after CTL019 infusion. The induction of B-cell aplasia was observed, and indicates that the CAR T cells can function in the setting of relapsed acute leukemia. Both patients have also developed clinical and laboratory evidence of cytokine release syndrome and  
10 macrophage activation syndrome within a week of infusion. The cytokine profile observed in these patients is similar to prior reports of cytokine patterns in children with hemophagocytosis and macrophage activation syndrome or hemophagocytic lymphohistiocytosis (Tang et al, 2008, Br J Haematol 143:84-91; Behrens et al., 2011, J Clin Invest 121(6):2264-77). Macrophage activation syndrome is  
15 characterized by hyperinflammation with prolonged fever, hepatosplenomegaly, and cytopenias. Laboratory findings characteristic of this syndrome are elevated ferritin, triglycerides, transaminases, bilirubin (mostly conjugated) and soluble interleukin-2 receptor  $\alpha$ -chain, and decreased fibrinogen (Janka et al., 2012, Annu Rev Med 63:233-46). Recent studies indicate that tocilizumab (anti-IL6) has promise for  
20 glucocorticoid resistant GVHD (Drobyski et al, 2011, Biol Blood Marrow Transplant 17(12): 1862-8; Le Huu et al, 2012, J Invest Dermatol 132(12):2752-61; Tawara et al, 2011, Clinical Cancer Research 17:77-88), and the results presented herein are consistent with these data.

The vigorous in vivo expansion of CTL019, persistent B-cell aplasia  
25 and prominent anti-leukemia activity imply substantial and sustained effector functions of the CTL019 cells in pediatric patients with advanced ALL. The high efficiency of trafficking of CAR T cells to the CNS is encouraging as a mechanism for surveillance to prevent relapse in a sanctuary site such as the CNS (Pullen et al, 1993, J Clin Oncol 11(5):839-49), and supports the testing of CAR T-cell-directed  
30 therapies for CNS lymphomas and primary CNS malignancies. With the exception of B-cell aplasia, the duration of which is currently undefined, it is believed that the use of immune-based therapies such as CTL019 may have a favorable profile of long-term adverse effects compared to the high doses of chemotherapy and radiation that

are employed as the current standard of care for most cases of pediatric leukemia (Garcia-Manero and Thomas, 2001, Hematol Oncol Clin North Am 15(1): 163-205).

Induction of complete remissions of ALL by chimeric antigen receptor-expressing T  
5 cells

Tocilizumab (anti-IL6) has promise for glucocorticoid resistant GVHD, and the results presented herein are consistent with these data. Further, it is interesting to note that in CHOP 100, the CRS manifesting as high fever, hypotension and multi-organ failure was resistant to the high doses of glucocorticoids administered  
10 over the previous 2 days before cytokine directed therapy. Finally, in CHOP- 100 the biphasic changes in IL-1 $\beta$ , IL-1RA and IL-2 shown in Figure 4B may have been related to cytokine-directed therapy with etanercept and tocilizumab.

The induction of remission in a patient refractory to blinatumomab therapy further highlights the potency of CTL019 cells. The high efficiency of  
15 trafficking of CAR T cells to the CNS is encouraging as a mechanism for surveillance to prevent relapse in a sanctuary site such as the CNS, and supports the testing of CAR T-cell-directed therapies for CNS lymphomas and primary CNS malignancies. Neither patient has experienced cognitive effects that might be ascribed to the trafficking of T cells to the CNS.

20

Example 4: Summary information

Various markers were measured in patients receiving CAR T cells. As a non-limiting example, Ferritin, Myoglobin, and plasminogen activator inhibitor- 1 (PAI-1) were measure; see Figures 10, 11 and 12, respectively. Elevated levels of  
25 these markers correlated with outcome. Patients designated as -01, -03, -09, -100 and -101 were classified as complete responders. Patients designated as -02, -05, -10 (second infusion and response around D70) and -12 were classified as partial responders. Patient designated as -06, -07 and -14 were classified as non-responders.

30

The disclosures of each and every patent, patent application, and publication cited herein are hereby incorporated herein by reference in their entirety. While this invention has been disclosed with reference to specific embodiments, it is apparent that other embodiments and variations of this invention may be devised by others skilled in the art without departing from the true spirit and scope of the

invention. The appended claims are intended to be construed to include all such embodiments and equivalent variations.

## CLAIMS

What is claimed is:

1. A method of treating a patient having a disease, disorder or condition associated with an elevated expression of a tumor antigen, the method comprising administering a first-line therapy and a second-line therapy to a patient in need thereof, wherein the first line therapy comprises administering to the patient an effective amount of a cell genetically modified to express a CAR, wherein the CAR comprises an antigen binding domain, a transmembrane domain, and an intracellular signaling domain.
2. The method of claim 1, wherein following the administration of the first-line therapy, cytokine levels in the patient are monitored to determine the appropriate type of second-line therapy to be administered to the patient and the appropriate second-line therapy is administered to the patient in need thereof.
3. The method of claim 2, wherein an increase in the level of a cytokine identifies a type of cytokine inhibitory therapy to be administered to the patient in need thereof.
4. The method of claim 3, wherein the cytokine is selected from the group consisting of IL-1 $\beta$ , IL-2, IL-4, IL-5, IL-6, IL-8, IL-10, IL-12, IL-13, IL-15, IL-17, IL-1Ra, IL-2R, IFN- $\alpha$ , IFN- $\gamma$ , MIP-1 $\alpha$ , MIP-1 $\beta$ , MCP-1, TNF $\alpha$ , GM-CSF, G-CSF, CXCL9, CXCL10, CXCR factors, VEGF, RANTES, EOTAXIN, EGF, HGF, FGF- $\beta$ , CD40, CD40L, ferritin, and any combination thereof.
5. The method of claim 3, wherein the cytokine inhibitory therapy is selected from the group consisting of a small interfering RNA (siRNA), a microRNA, an antisense nucleic acid, a ribozyme, an expression vector encoding a transdominant negative mutant, an antibody, a peptide, a small molecule, a cytokine inhibitory drug, and any combination thereof.
6. The method of claim 2, wherein the cytokine levels are monitored by detecting the protein level of the cytokine in a biological sample from the patient.

7. The method of claim 2, wherein the cytokine levels are monitored by detecting the nucleic acid level of the cytokine in a biological sample from the patient.

8. A method of reducing or avoiding an adverse effect associated with the administration of a cell genetically modified to express a CAR, wherein the CAR comprises an antigen binding domain, a transmembrane domain, and an intracellular signaling domain, the method comprising monitoring the levels of a cytokine in a patient to determine the appropriate type of cytokine therapy to be administered to the patient and administering the appropriate cytokine therapy to the patient.

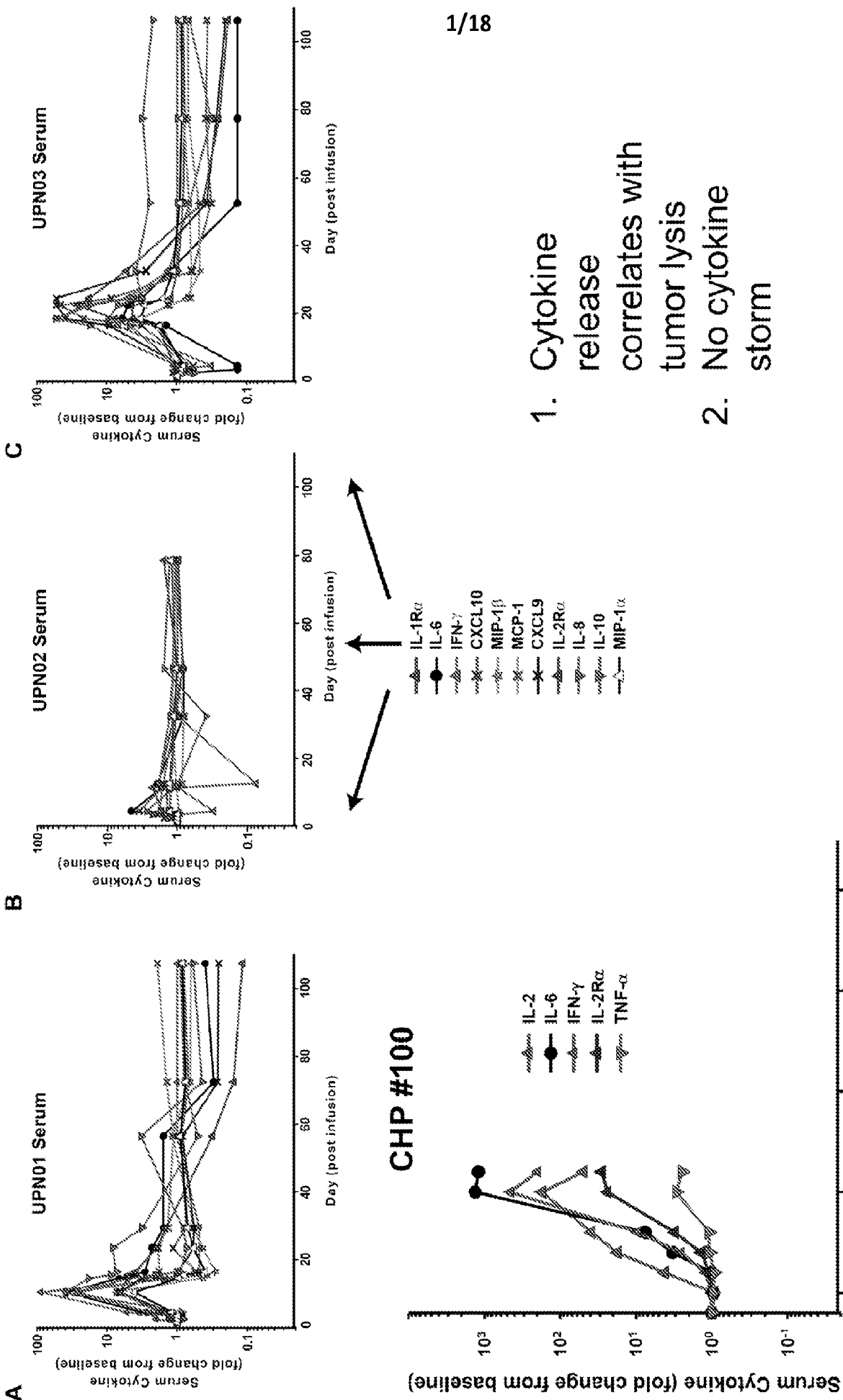
9. The method of claim 8, wherein an increase in the level of a cytokine identifies a type of cytokine inhibitory therapy to be administered to the patient.

10. The method of claim 9, wherein the cytokine is selected from the group consisting of IL-1 $\beta$ , IL-2, IL-4, IL-5, IL-6, IL-8, IL-10, IL-12, IL-13, IL-15, IL-17, IL-1Ra, IL-2R, IFN- $\alpha$ , IFN- $\gamma$ , MIP-1 $\alpha$ , MIP-1 $\beta$ , MCP-1, TNF $\alpha$ , GM-CSF, G-CSF, CXCL9, CXCL10, CXCR factors, VEGF, RANTES, EOTAXIN, EGF, HGF, FGF- $\beta$ , CD40, CD40L, ferritin, and any combination thereof.

11. The method of claim 9, wherein the cytokine inhibitory therapy is selected from the group consisting of a small interfering RNA (siRNA), a microRNA, an antisense nucleic acid, a ribozyme, an expression vector encoding a transdominant negative mutant, an intracellular antibody, a peptide, a small molecule, a cytokine inhibitory drug, and any combination thereof.

12. The method of claim 8, wherein the cytokine levels are monitored by detecting the protein level of the cytokine in a biological sample from the patient.

13. The method of claim 8, wherein the cytokine levels are monitored by detecting the nucleic acid level of the cytokine in a biological sample from the patient.



1. Cytokine release correlates with tumor lysis
2. No cytokine storm

REPLACEMENT SHEET

Figure 1

On-Target Delayed Cytokine Release  
Syndrome and Tumor Lysis Syndrome in r/r ALL

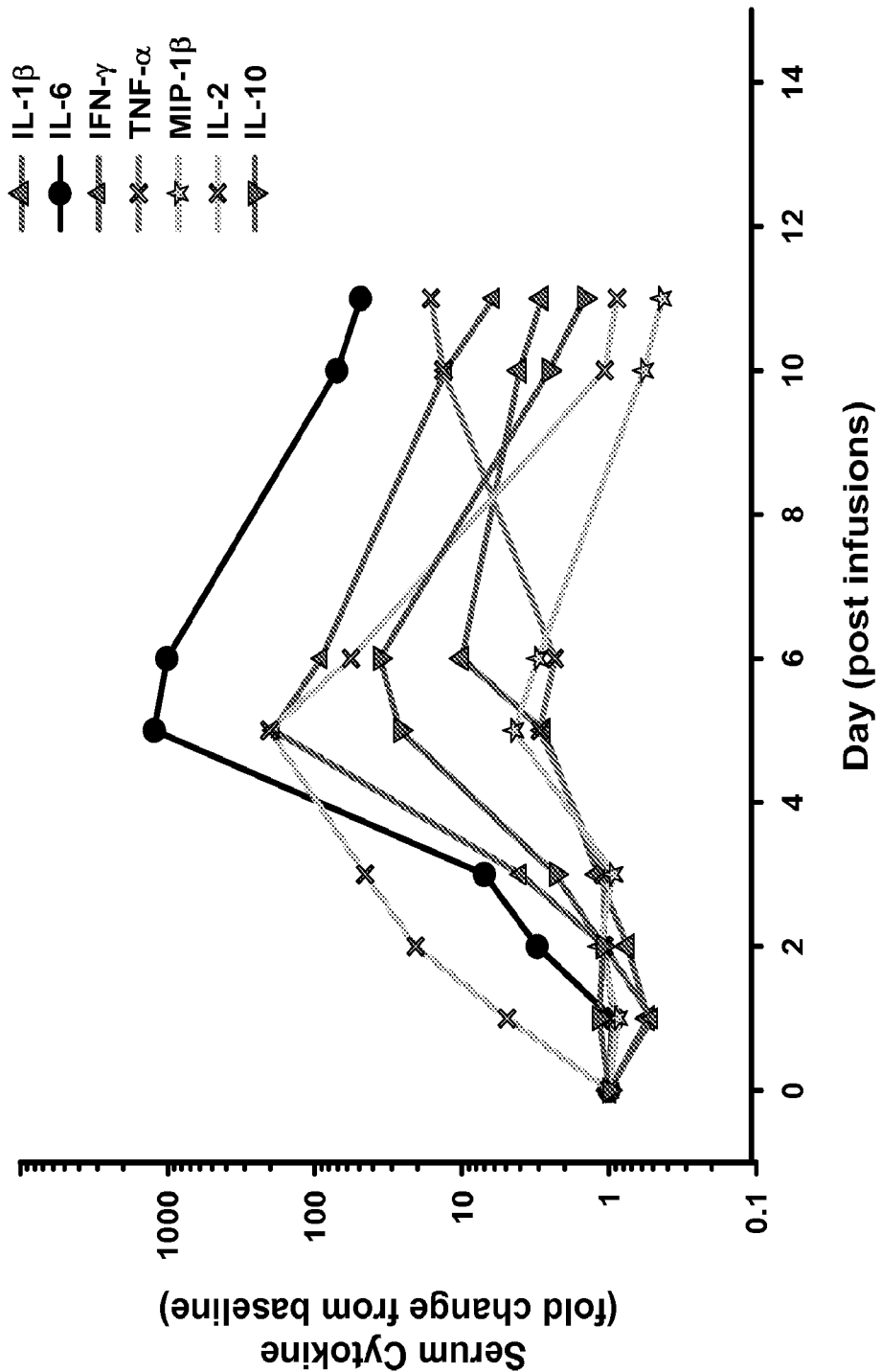
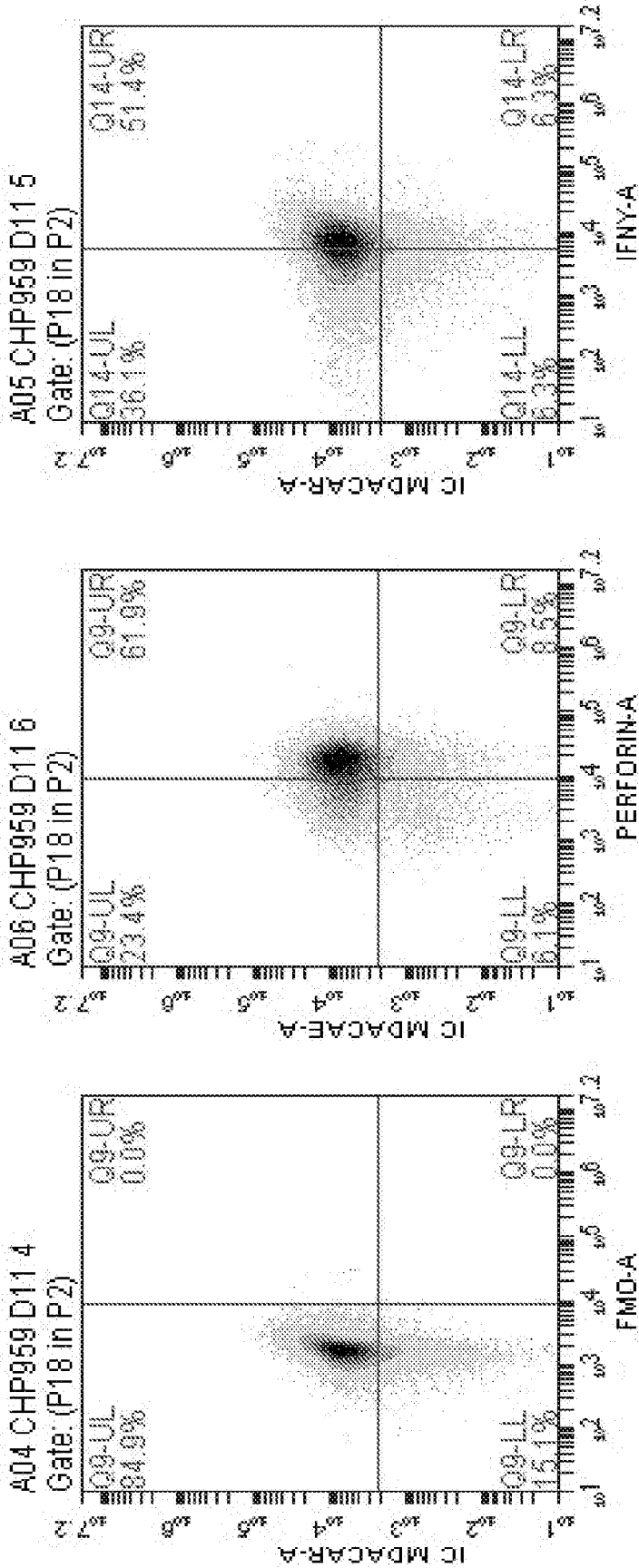


Figure 2 REPLACEMENT SHEET

IFN- $\gamma$

Perforin

FMO  
(no detection antibody)



Detection of CART19 cells

REPLACEMENT SHEET

Figure 3

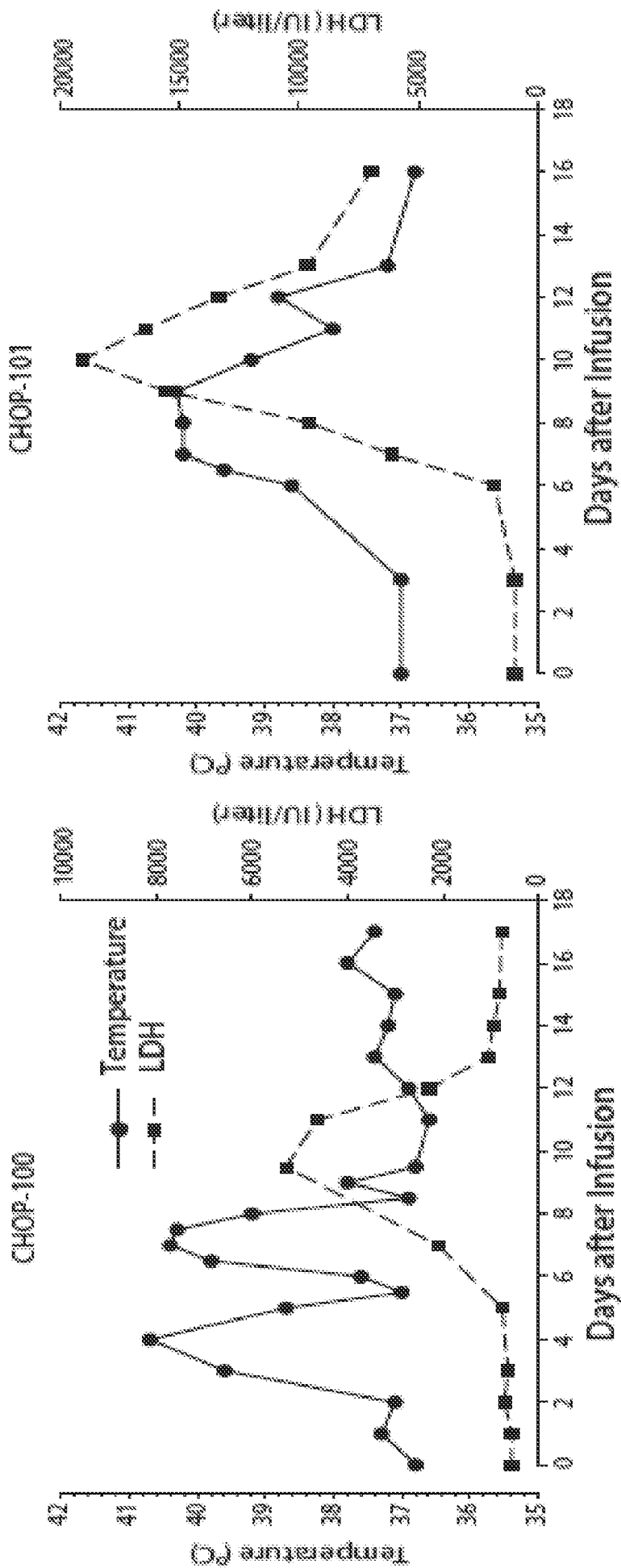
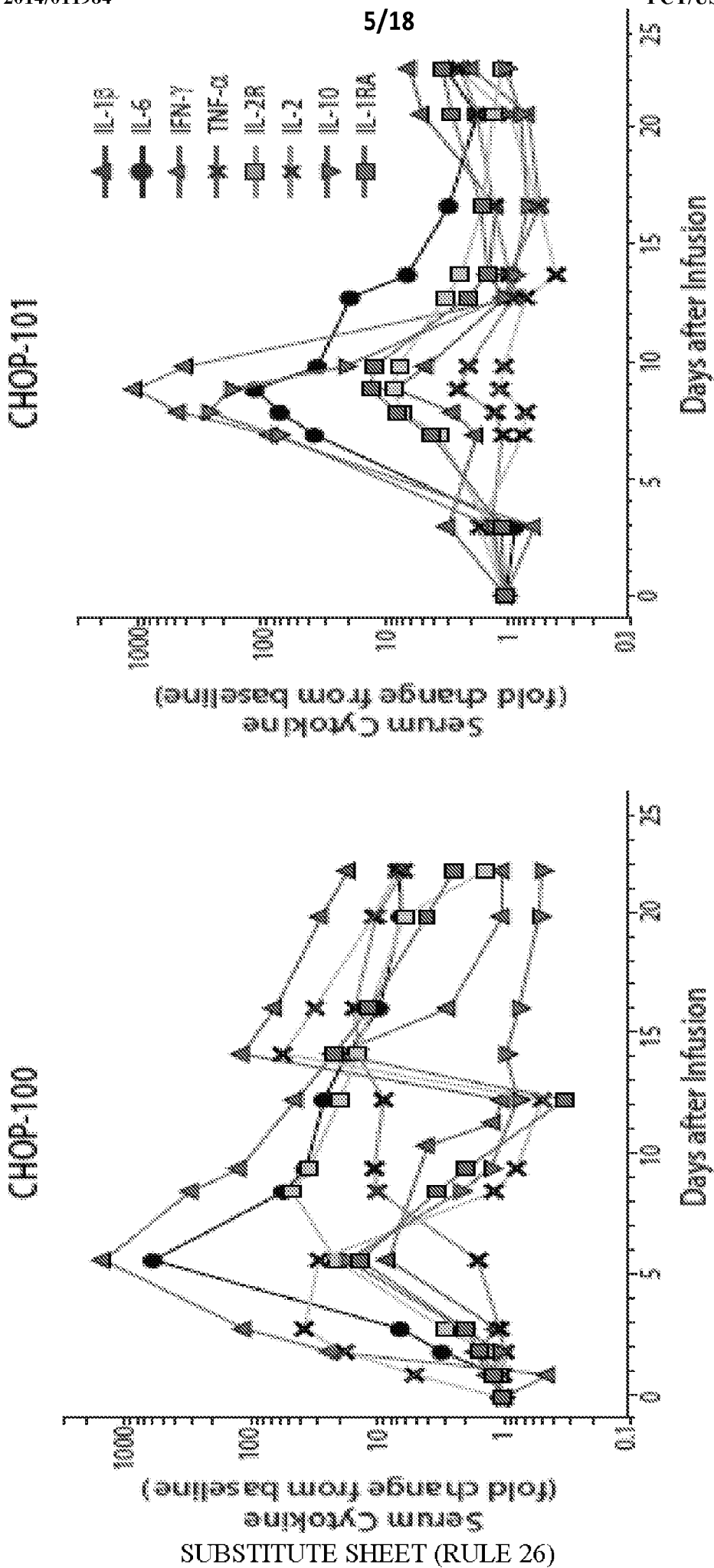
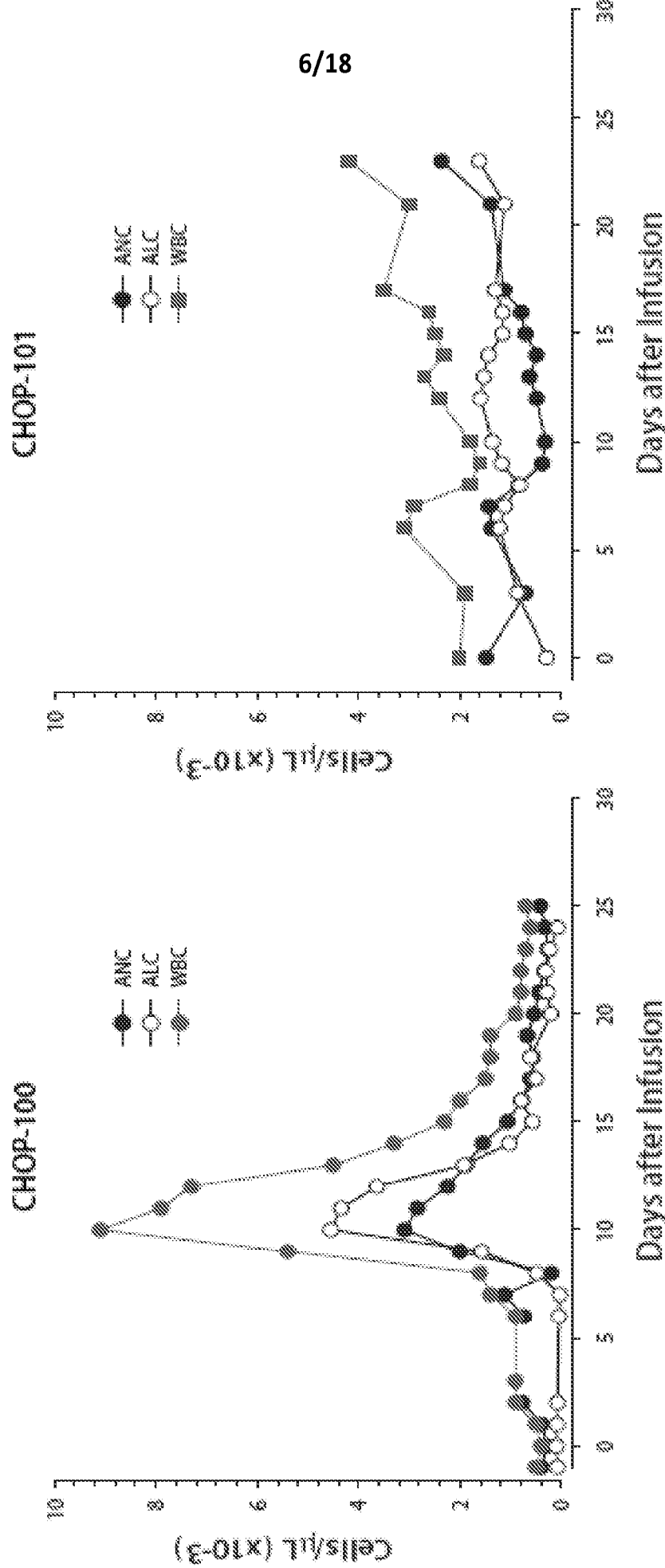


Figure 4A REPLACEMENT SHEET



REPLACEMENT SHEET

Figure 4B



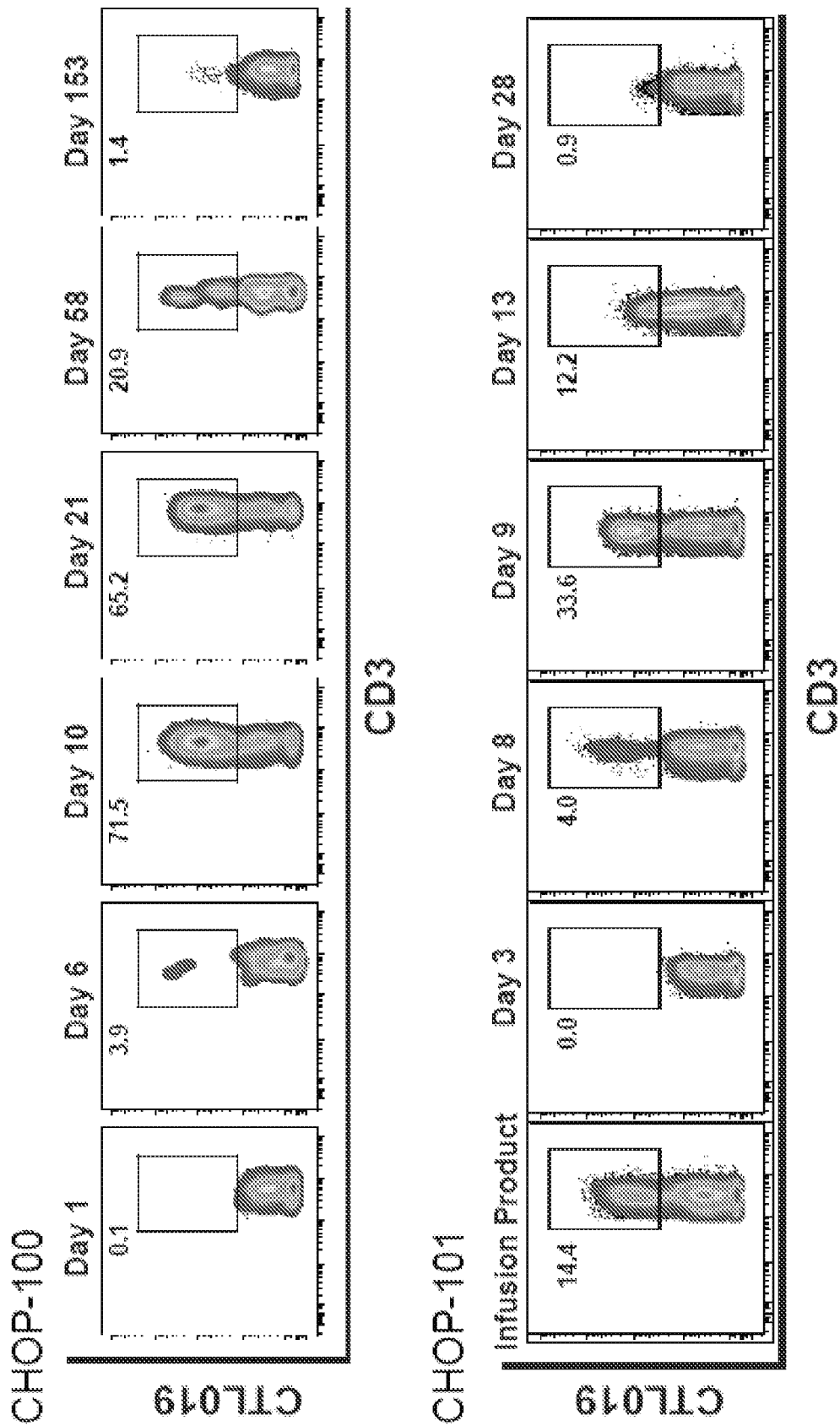


Figure 5A REPLACEMENT SHEET

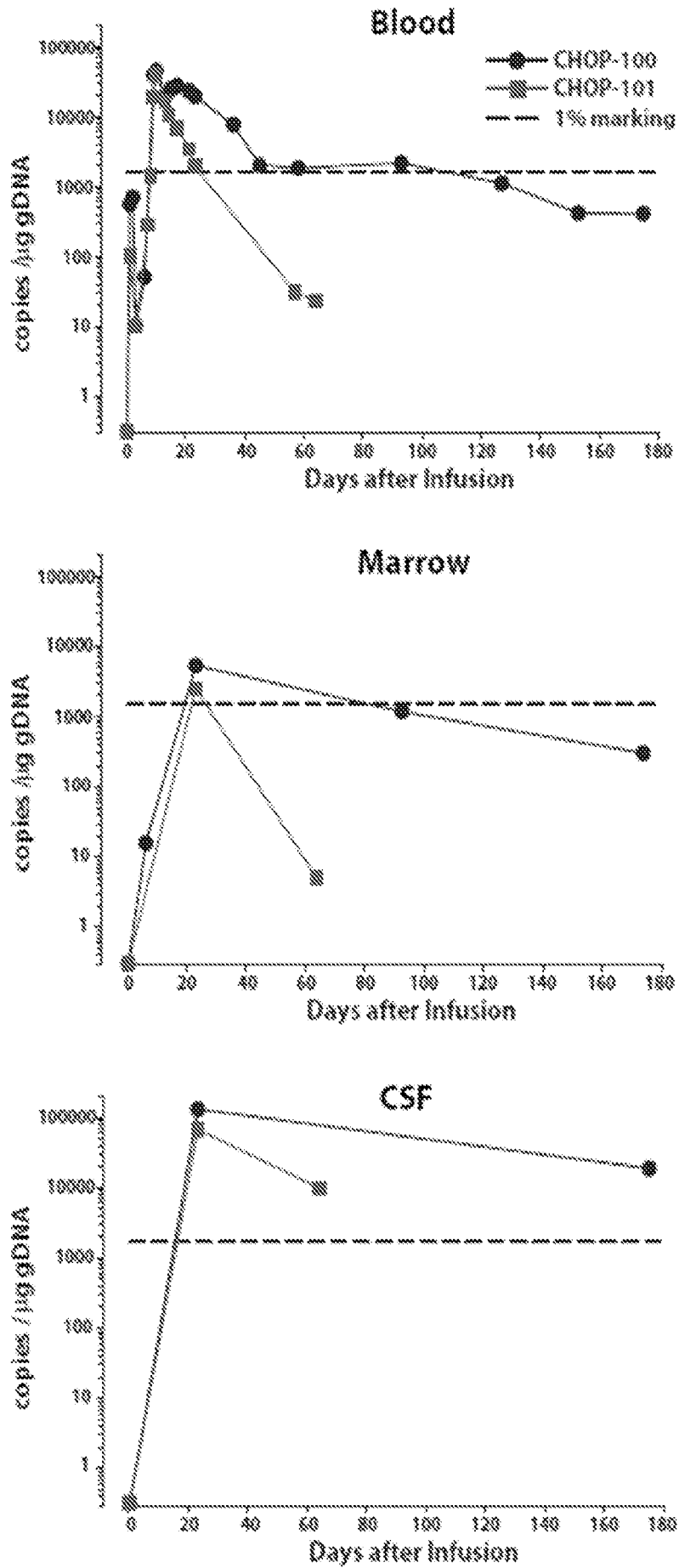
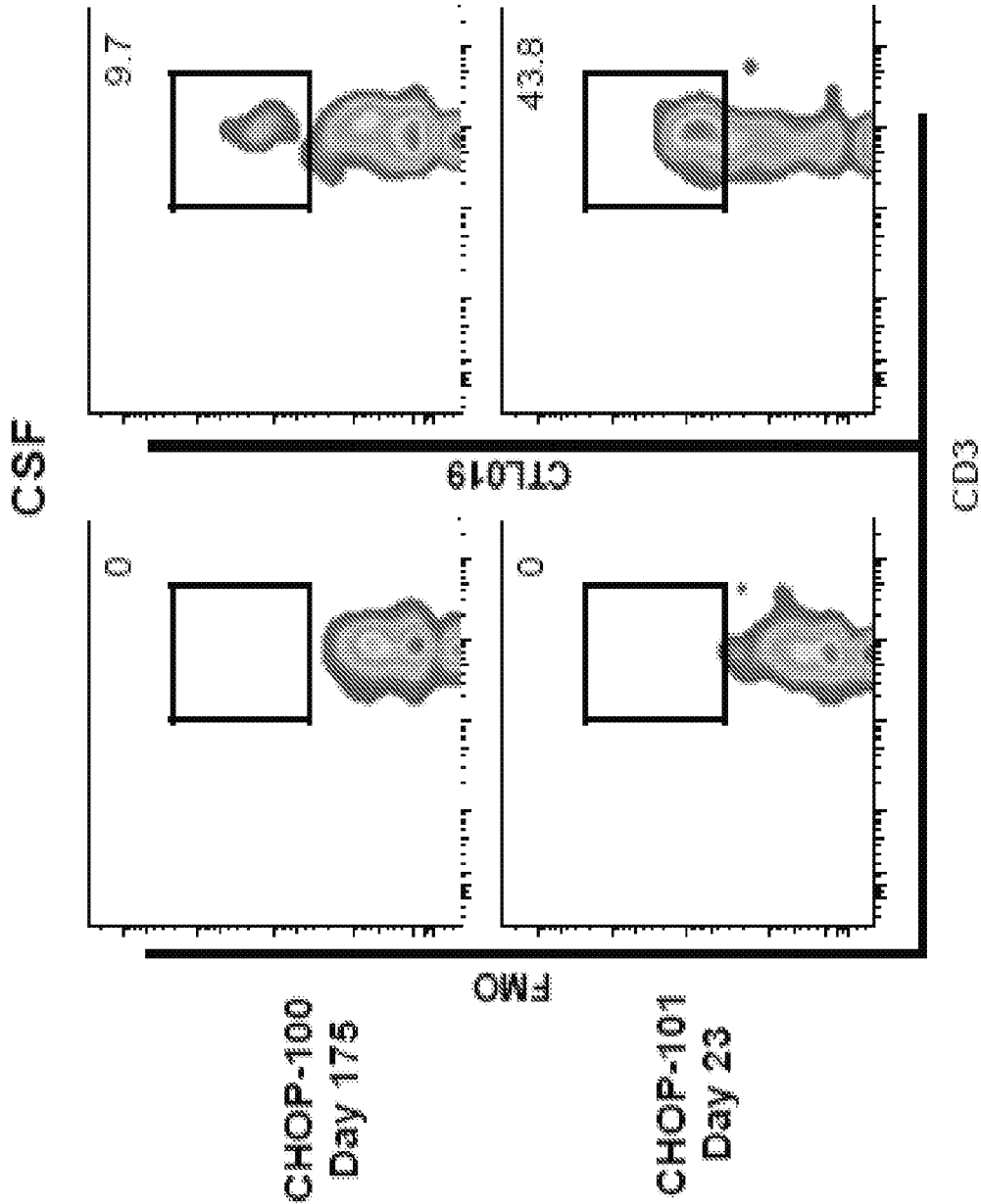


Figure 5B



REPLACEMENT SHEET

Figure 5C

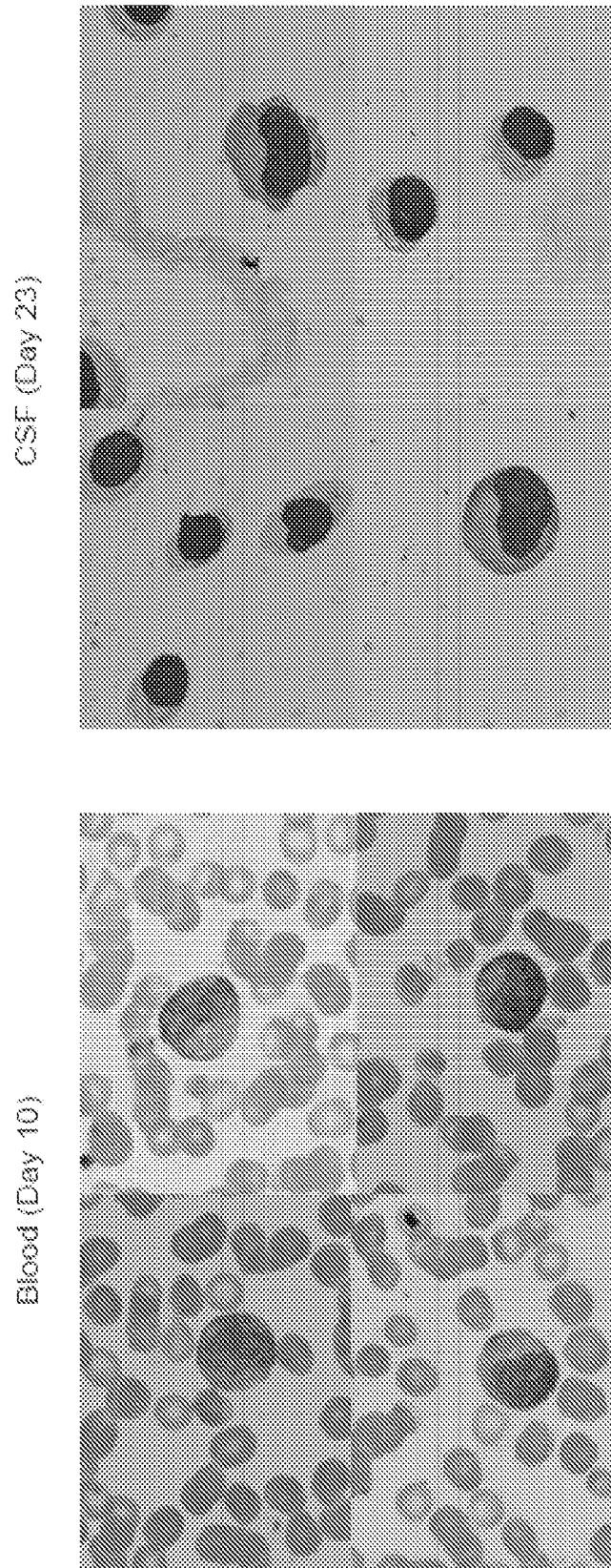
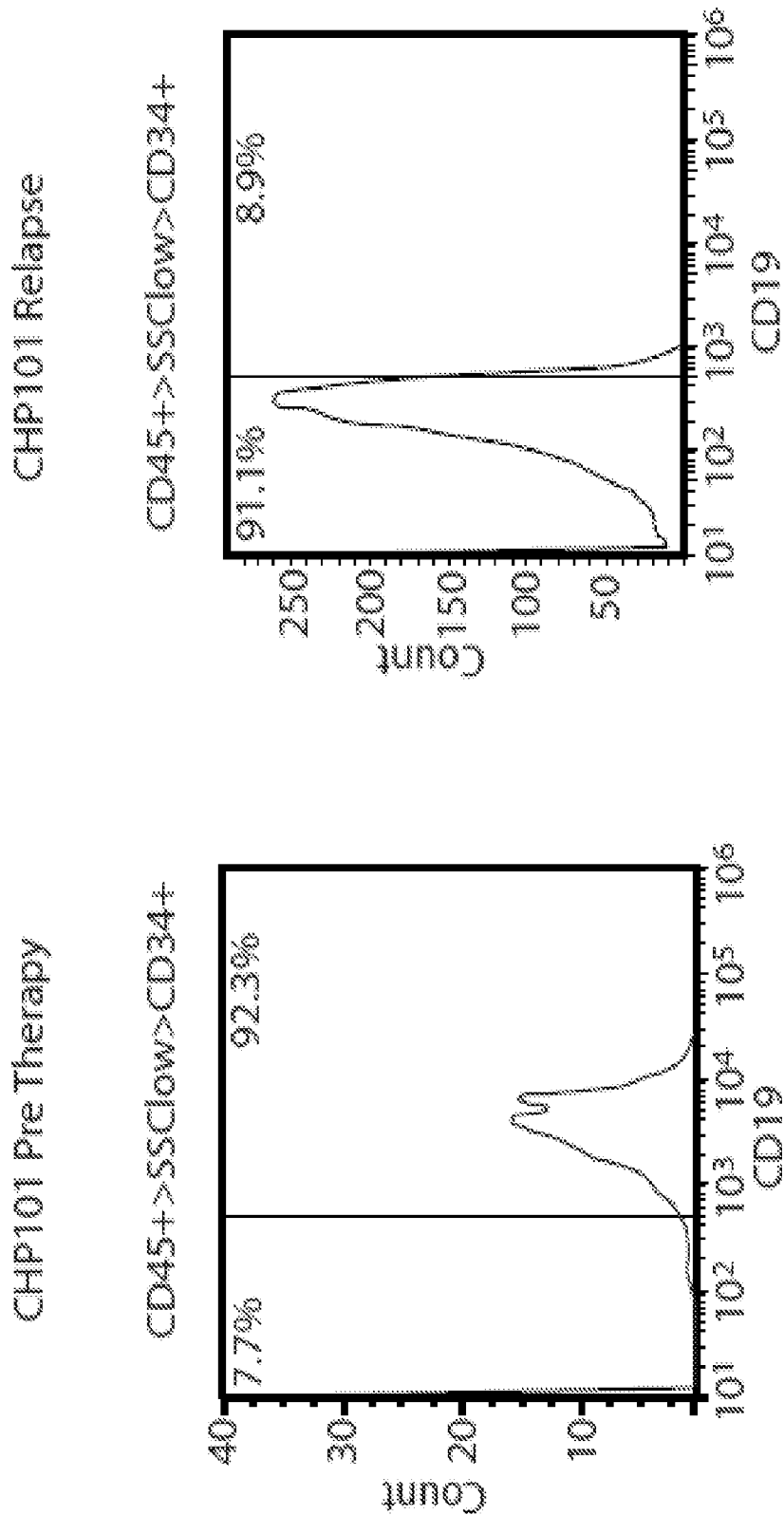


Figure 5D REPLACEMENT SHEET

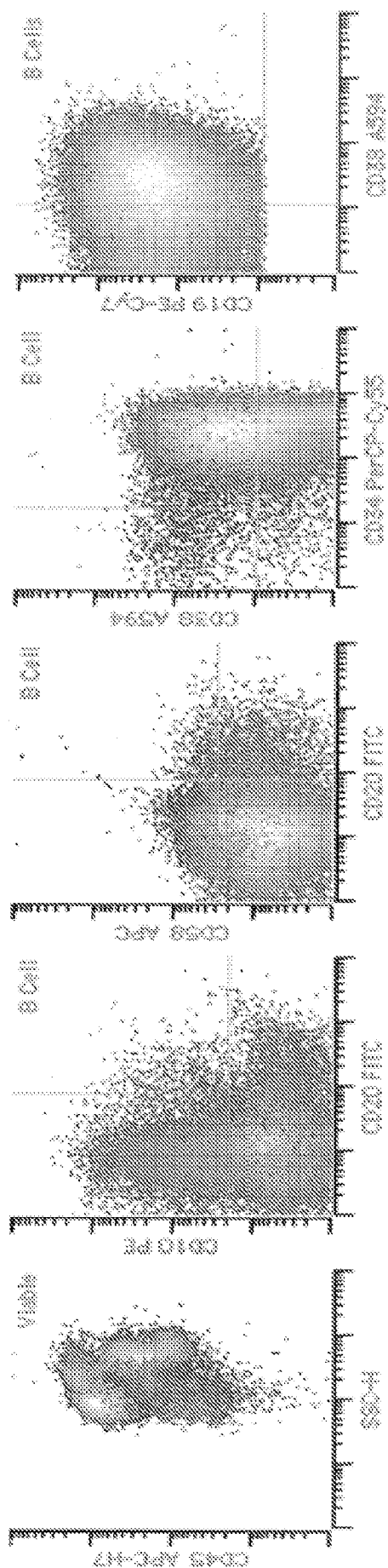


REPLACEMENT SHEET

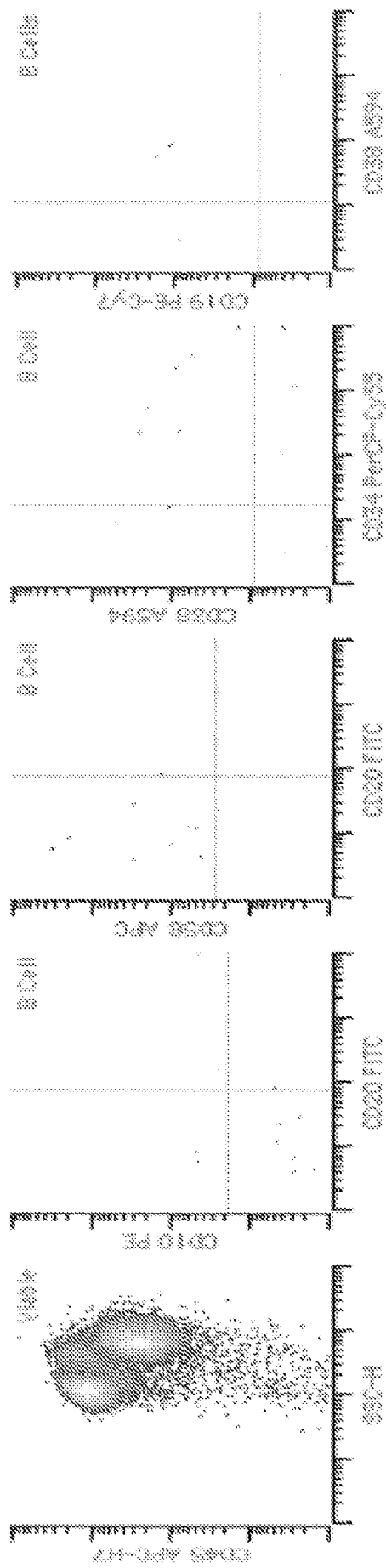
Figure 6

12/18

CHOP-101 Baseline



CHOP-101 Day +23



REPLACEMENT SHEET

Figure 7

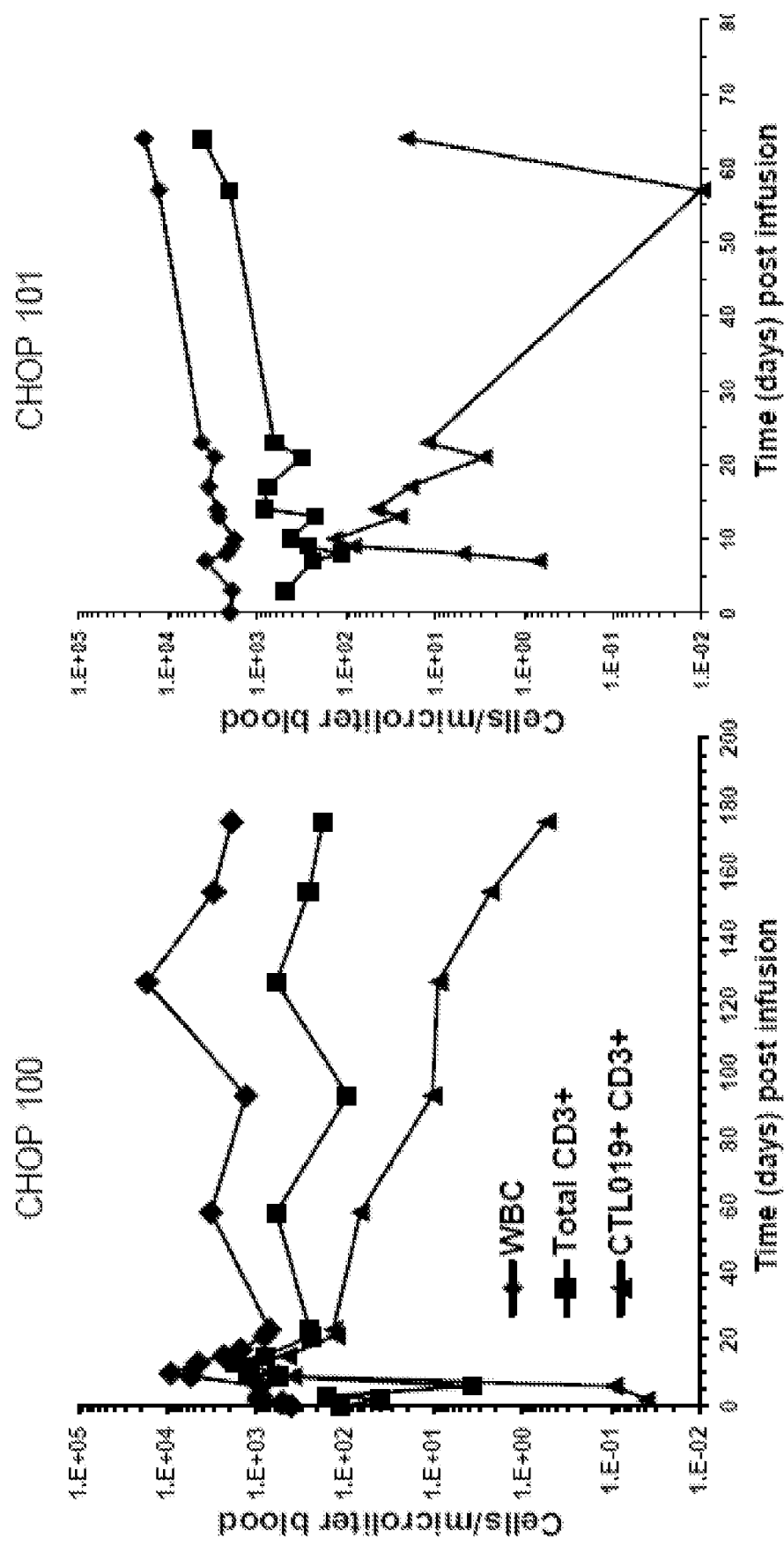


Figure 8 REPLACEMENT SHEET

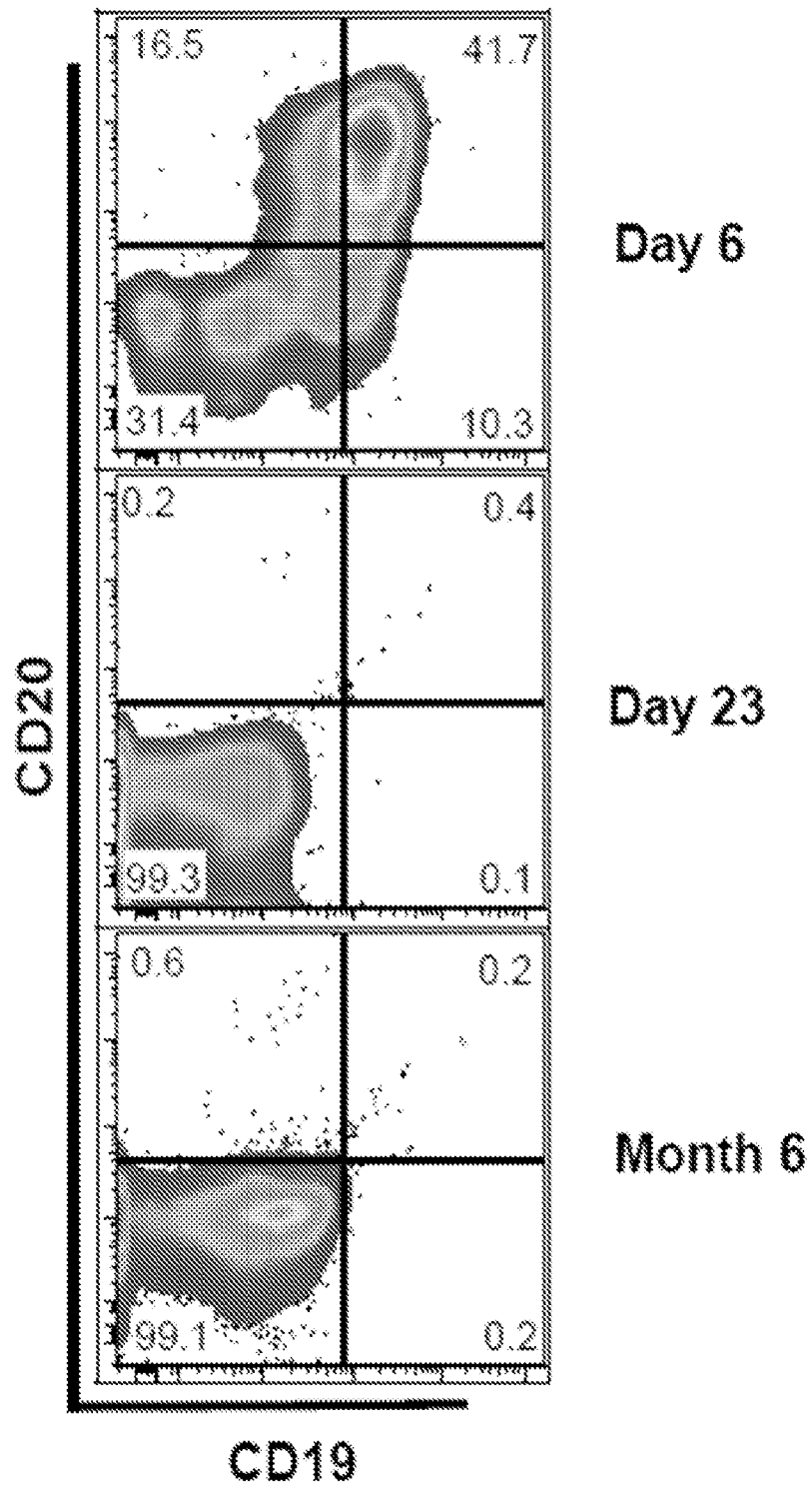


Figure 9A

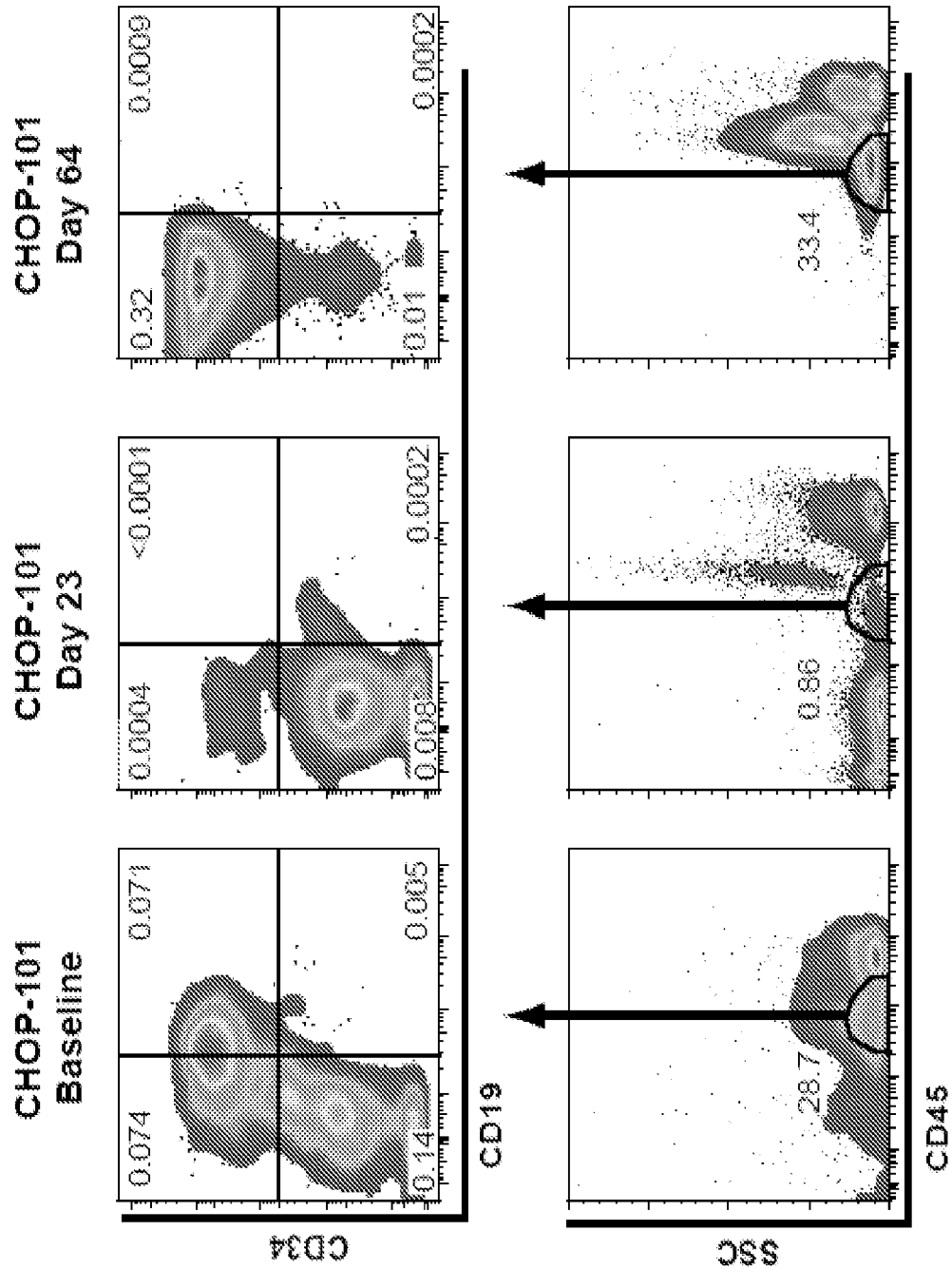


Figure 9B REPLACEMENT SHEET

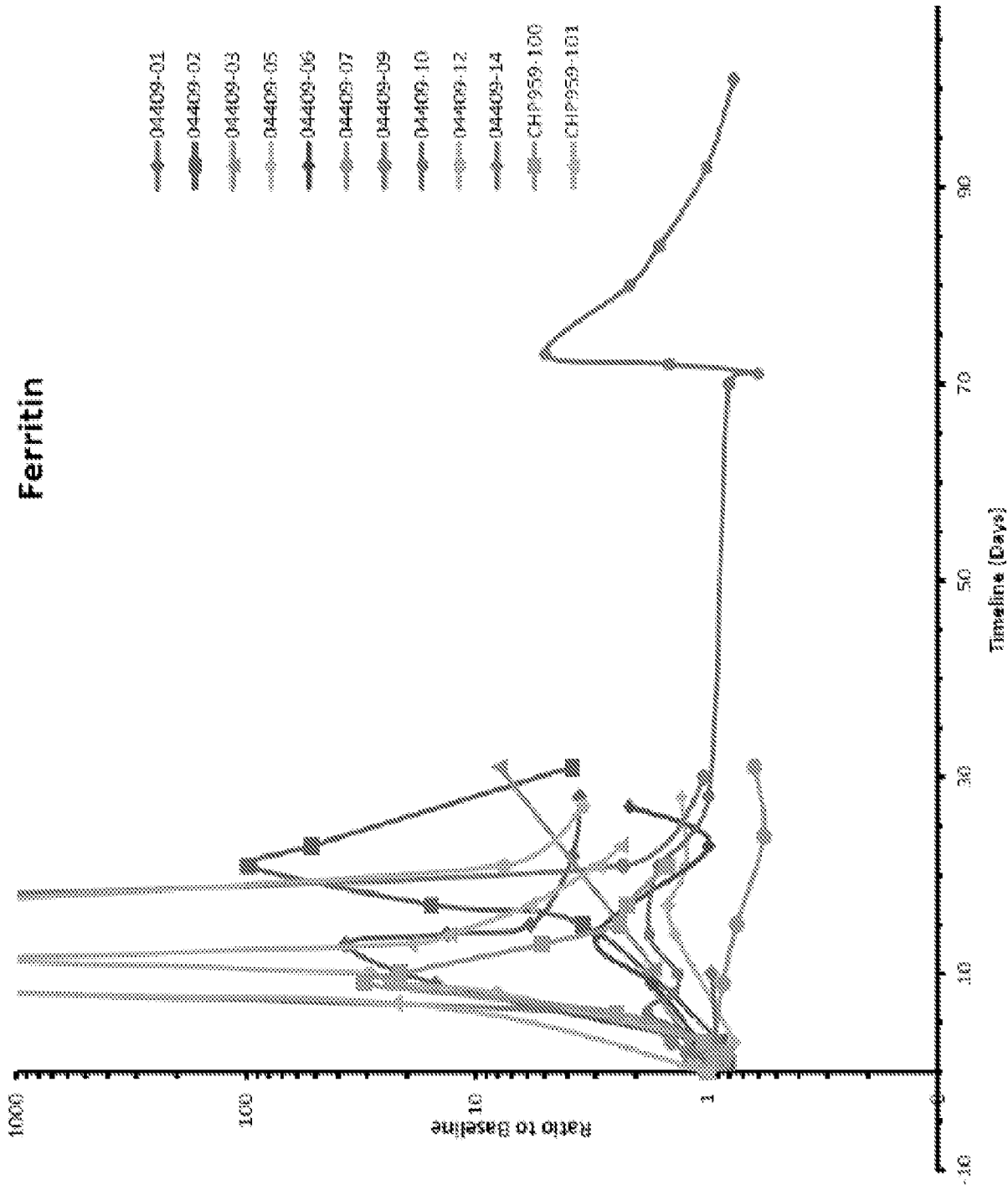
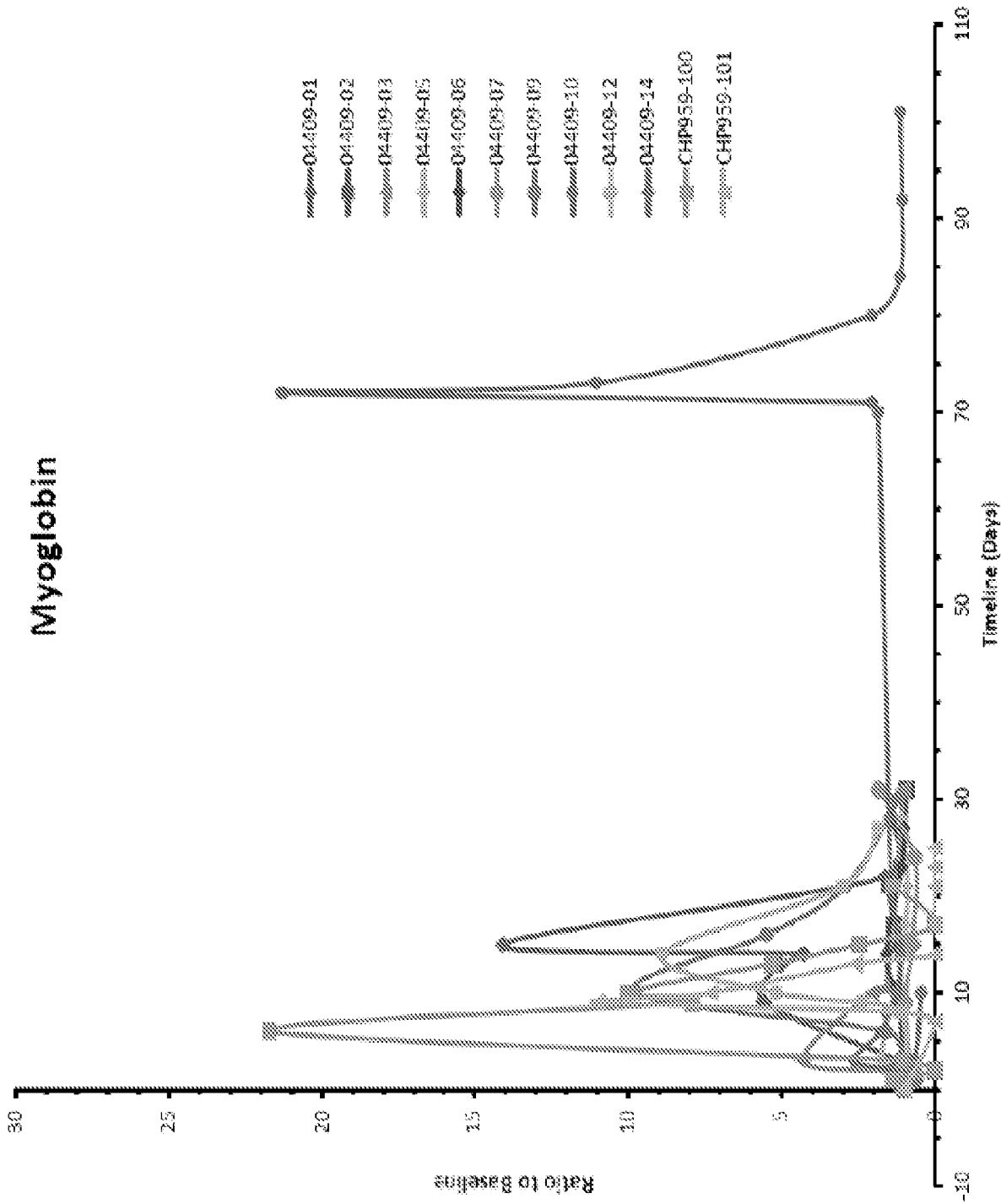


Figure 10 REPLACEMENT SHEET



REPLACEMENT SHEET

Figure 11

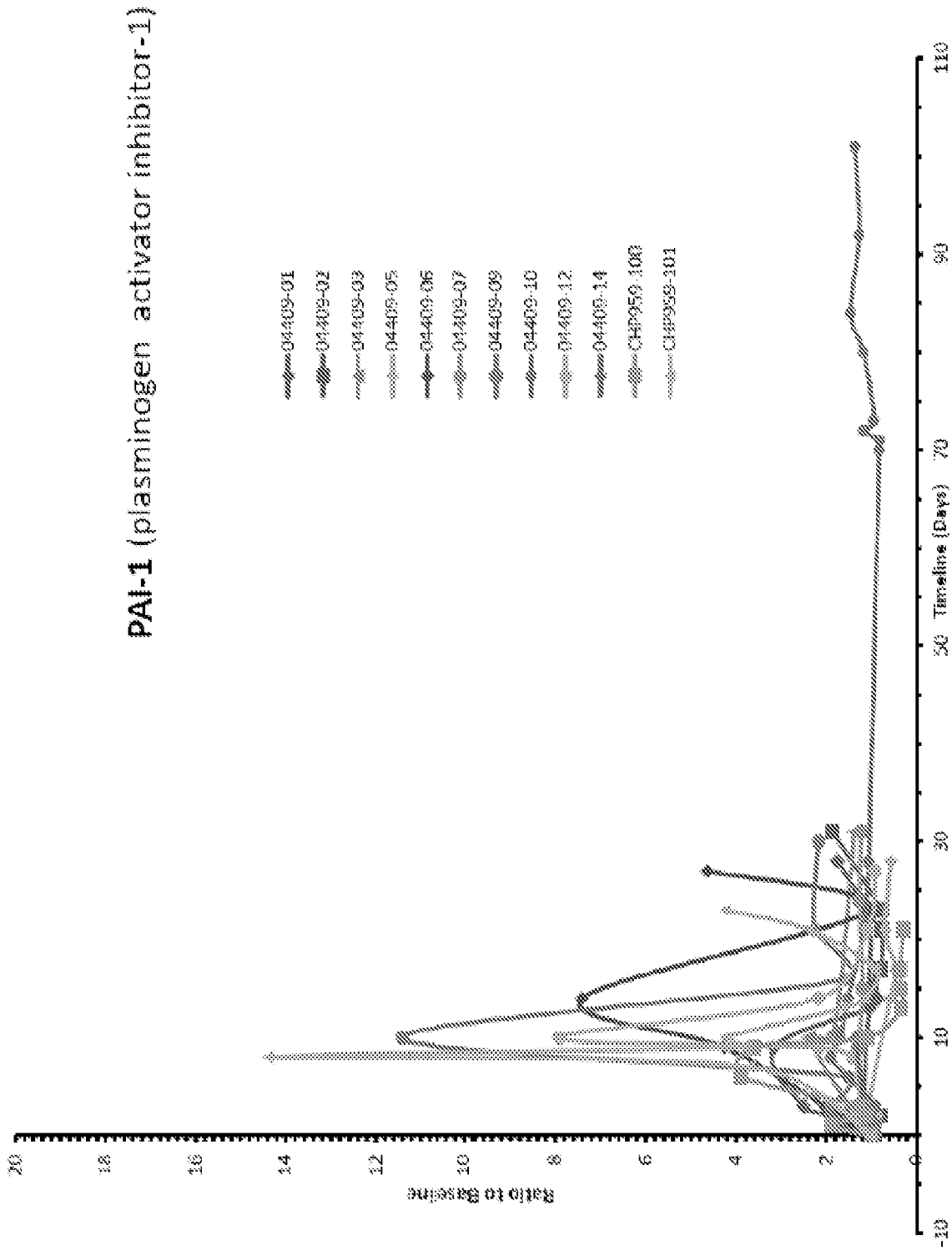


Figure 12 REPLACEMENT SHEET

## INTERNATIONAL SEARCH REPORT

International application No.

PCT/US201 3/050267

## A. CLASSIFICATION OF SUBJECT MATTER

IPC(8) - A61K 39/00 (2013.01)

USPC - 530/387.3

According to International Patent Classification (IPC) or to both national classification and IPC

## B. FIELDS SEARCHED

Minimum documentation searched (classification system followed by classification symbols)

IPC(8) - A61K 35/17, 38/17, 39/00, 48/00; A61P 35/00, 37/00, 37/02, 37/04; C07K 16/28; C12N 15/12 (2013.01)

USPC - 424/1.69; 514/1.1; 530/387.1, 387.3, 389.1

Documentation searched other than minimum documentation to the extent that such documents are included in the fields searched

CPC - A61K 39/00, 48/00; C07K 2319/00, C12N 5/0636, 2510/00 (2013.01)

Electronic data base consulted during the international search (name of data base and, where practicable, search terms used)

PatBase, Google Patents, Google, PubMed

## C. DOCUMENTS CONSIDERED TO BE RELEVANT

Category*	Citation of document, with indication, where appropriate, of the relevant passages	Relevant to claim No.
X ----- Y	WO 2012/079000 A1 (JUNE et al) 14 June 2012 (14.06.2012) entire document	1, 2, 6 ----- 3-5, 7-13
Y	US 2010/0273797 A1 (BOMAN et al) 28 October 2010 (28.10.2010) entire document	3-5, 8-13
Y	US 2009/0325167 A1 (CHAPPELL et al) 31 December 2009 (31.12.2009) entire document	7, 13
A	MORGAN et al. 'Case Report of a Serious Adverse Event Following the Administration of T Cells Transduced With a Chimeric Antigen Receptor Recognizing ErbB2.' Mol Ther. 18(4): Pages 843-51. 23 February 2010. entire document	1-13
A	KALOS et al. T Cells with Chimeric Antigen Receptors Have Potent Antitumor Effects and Can Establish Memory in Patients with Advanced Leukemia.' Sci Transl Med. 3(95): Pages 1-21 (95ra73). 10 August 2011. entire document	1-13

**FI** Further documents are listed in the continuation of Box C. ☐

• Special categories of cited documents:

"A" document defining the general state of the art which is not considered to be of particular relevance

"E" earlier application or patent but published on or after the international filing date

"L" document which may throw doubts on priority claim(s) or which is cited to establish the publication date of another citation or other special reason (as specified)

"O" document referring to an oral disclosure, use, exhibition or other means

"P" document published prior to the international filing date but later than the priority date claimed

"T" later document published after the international filing date or priority date and not in conflict with the application but cited to understand the principle or theory underlying the invention

"X" document of particular relevance; the claimed invention cannot be considered novel or cannot be considered to involve an inventive step when the document is taken alone

"Y" document of particular relevance; the claimed invention cannot be considered to involve an inventive step when the document is combined with one or more other such documents, such combination being obvious to a person skilled in the art

"&" document member of the same patent family

Date of the actual completion of the international search

01 November 2013

Date of mailing of the international search report

29 Nov 2013

Name and mailing address of the ISA/US

Mail Stop PCT, Attn: ISA/US, Commissioner for Patents  
P.O. Box 1450, Alexandria, Virginia 22313-1450

Facsimile No. 571-273-3201

Authorized officer:

Blaine R. Copenheaver

PCT Helpdesk: 571-272-4300  
PCT OSP: 571-272-7774